



FOOTWEAR





EASTON EC90 SLX

9
7
5
3
1



EASTON® ADVANCED CARBON COMPOSITE SOLES

Whether you race, or just like to ride far and fast, you know how important a good pair of cycling shoes can be. Your shoes are the point where power generates forward motion; comfort and efficient power transfer that are essential to getting the most from your body.

Giro's best cycling shoes, the Prolight™ SLX, Empire™ and Factor™ are known for being exceptionally comfortable and efficient, thanks in part to their innovative carbon fiber outsoles. Developed with industry-leading composites experts at Easton®, we've upped the ante for 2014 with a new generation of carbon

fiber outsoles called Easton® ACC (Advanced Carbon Concept) that redefine best-in-class performance.

Built for riders focused on getting maximum uphill performance from minimalist design, our new Prolight™ SLX II shoe features an updated Easton EC90™ SLX II carbon sole. With a new asymmetric design and Easton®'s proprietary high-modulus unidirectional carbon fiber, it's 15 grams lighter than our previous SLX sole at the same stiffness, all while maintaining a true flat edge that doesn't wrap up against the foot like so-called "bathtub" designs. Its ultra-thin 6.5mm profile

yields a minimal stack height, and features titanium hardware and replaceable heel pads for enhanced durability.

Designed to perform across a range of rider styles, from sprinting to climbing and time trialing, the Easton® EC90™ ACC unidirectional carbon sole on our new Factor™ ACC and Empire™ ACC shoes is a fine tuned blend of peak stiffness and efficiency. It utilizes a new asymmetric design with

I-beam construction for added torsional stiffness and a 30 percent increase in longitudinal stiffness over our previous EC90 outsole. Like our other outsole designs, it features a flat edge profile to enhance comfort and an ultra-thin 6.5mm profile for minimal stack height, as well as replaceable heel pads, for enhanced durability to last through the seasons.





EVOFIBER™ BY GIRO

We could make bicycles, or wheels, or any of the many things that go along with riding. We choose, though, to focus on the rider. Giro exists to enhance the rider's experience, and by putting all of our knowledge and resources into the things you wear and the pieces that connect you to the bicycle, we can go deeper into the details, and truly create things that enhance your connection to the pedals and to the freedom that riding brings.

When we launched our line of cycling shoes four years ago,

we made a commitment to be more than just another shoe on the shelf. We aimed to lead the market by focusing on fit, performance and style. Since then, our line has been defined by innovative performance features like **SuperNatural** Fit, adjustable arch support, **Easton**® carbon outsoles, proprietary **Vibram**® rubber outsoles, **X-Static**® fibers and more. But there is always room to improve, especially in the details.

Currently, many cycling shoes use a pattern of mesh panels, microfiber and other materials to

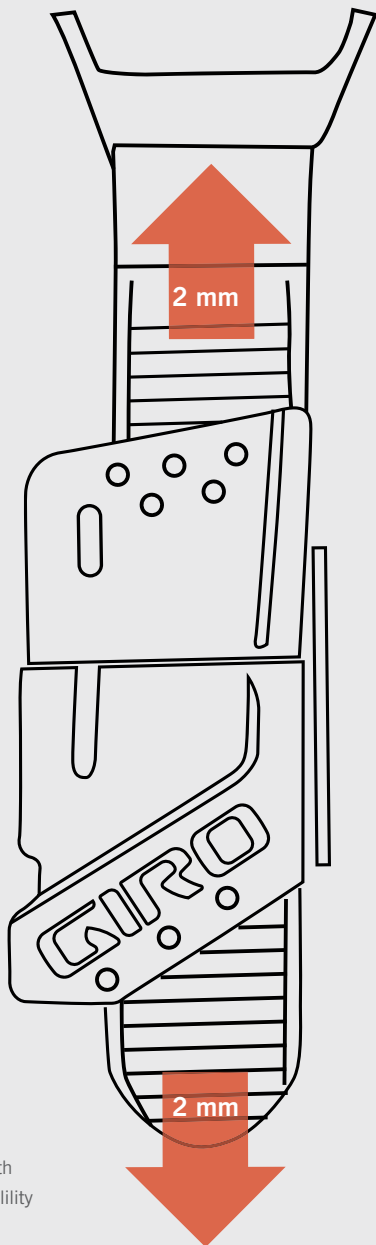
create the shoe's upper. Though functional, the ultimate material for a cycling shoe would be a single fabric that's supple yet doesn't stretch, waterproof yet breathable, and able to be tuned in structure and thickness for the best balance of fit, weight and durability. It would keep you comfortable in both heat and cold, and eliminate the excess seams, adhesives and components that can add weight and compromise comfort.

That material exists. It's called **Evofiber**™, and it's available in select Giro shoes for 2014.

Evofiber™ takes the best attributes of mesh and microfiber, and fuses them into a single fabric that repels water and improves breathability throughout the shoe. By eliminating the extra seams and adhesives required to insert mesh panels, the durability, comfort and weight of our shoes can all be dramatically improved. **Evofiber**™ also holds shape exceptionally well, and is fast drying and easy to clean.

Welcome to the evolution of cycling footwear material.

MICRO-ADJUSTABLE BUCKLES



The **MR-1** buckle with 2mm micro adjustability in two directions.

It doesn't matter how advanced a modern cycling shoe is if it doesn't fit well. While there are many ways to close a shoe, the ratcheting buckle is the standard, and for good reason. Simple and intuitive, it's easy to maintain and provides excellent adjustment. But buckles are also easily damaged by impacts with rocks or crashes, and the incremental adjustment of many buckles is not as customizable as closures like laces or straps.

function on and off-road. The **MR-1** also has an exceptionally low stack height—almost 7mm lower than our previous buckle design, reducing the likelihood of damage. We've even created base plates offering two mounting positions to improve the buckle's integration with different shoe designs and foot shapes.

The patent pending **MR-2** buckle is micro-adjustable in 3mm increments to tension the strap, with a quick release by simply depressing the upper and lower levers simultaneously. The design also allows grit to be cleared easily for reliable function on and off-road, and it has a lower stack height than our previous buckle design, reducing the likelihood of damage. It offers two mounting positions and a guard that helps to prevent unwanted release of the buckle, and is compatible with our previous shoe designs should a rider need a replacement or want to upgrade older Giro shoes.

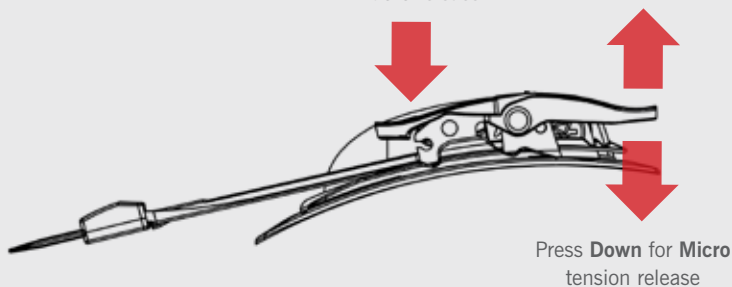
We wanted a better buckle. So we set out to make it. We wanted all the familiar traits of well-designed buckles, but with improved adjustment and a reduced likelihood of damage. After almost two years of design and development, we're proud to introduce the new **MR-1** and **MR-2** buckles.

The patent-pending **MR-1** buckle is truly micro-adjustable in tension and release, allowing two-way adjustment in 2mm increments by simply pulling up to tighten the strap or depressing the lever to release it. At the same time, its design allows grit to be cleared easily for reliable

The **MR-2** buckle with ultra low-profile design.

Press **Down** for **Macro** release

Pull **Up** for **Micro** tension adjustment



Press **Down** for **Micro** tension release

MEN'S SHOE SIZING

PERFORMANCE FIT AND HV FIT*

EU	39	39.5	–	40	40.5	41	41.5	–	42	42.5	43	
US MEN'S	6.5	6.75	7	7.25	7.5	8	8.25	8.5	8.75	9	9.5	
CM	24	24.25	–	24.75	25	25.25	25.25	–	26	26.25	26.75	
UK	5.5	5.75	6	6.25	6.5	7	7.25	7.5	7.75	8	8.5	

*Giro offers the HV fit option for riders with wide feet (EE width) or very high instep and arch heights. It can also help to accommodate riders who require internal wedges or custom orthotics that are thicker than traditional cycling footbeds.

WOMEN'S SHOE SIZING

EU	36	–	37	–	37.5	38	38.5	39	39.5	–	
US WOMEN'S	5	5.5	5.75	6	6.25	6.5	7	7.5	7.75	8	
CM	22	–	22.75	–	23	23.25	23.75	24	24.25	–	
UK	3	3.5	3.75	4	4.25	4.5	5	5.5	5.75	6	

MEN'S FOOTBED SIZING

EU	39 - 40.5	41 - 42.5	43 - 44.5	45 - 46.5	47 - 48	49 - 50
US MEN'S	6.5 - 7.5	8 - 9	9.5 - 10.75	11 - 12.25	12.75 - 13	14 - 14.5
CM	24 - 25	25.5 - 26.5	26.75 - 27.75	28 - 29	29.5 - 29.5	30.5 - 31
UK	5.5 - 6.5	7 - 8	8.5 - 9.75	10 - 11.25	11.75 - 12.5	13 - 13.5

	43.5	44	-	44.5	45	45.5	46	46.5	-	47	-	48	49	50
	10	10.25	10.5	10.75	11	11.5	12	12.25	12.5	12.75	13	13.5	14	14.5
	27	27.25	27.75	-	28	28.25	28.75	29	-	29.25	-	30	30.5	31
	9	9.25	9.5	9.75	10	10.5	11	11.25	11.5	11.75	12	12.5	13	13.5

	40	40.5	41	41.5	-	42	-	42.5	43
	8.25	8.5	9	9.25	9.5	9.75	10	10.25	10.5
	24.75	25	25.25	25.5	-	26	-	26.25	26.75
	6.25	6.5	7	7.25	7.5	7.75	8	8.25	8.5

WOMEN'S FOOTBED SIZING

EU	36 - 37.5	38 - 39.5	40 - 41.5	42 - 43.5
US WOMEN'S	5 - 6.25	6.5 - 7.75	8.25 - 9.25	9.75 - 11
CM	22 - 23	23.5 - 24.5	24.75 - 25.75	26 - 27
UK	3 - 4.25	4.5 - 5.75	6.25 - 7.25	7.75 - 9



THE SUPERNATURAL FIT SYSTEM

The **SuperNatural Fit** system combines a thin, cycling-specific footbed with an adjustable arch support system that allows riders to custom-tune their fit right out of the box, without any tools or hassles.

By properly supporting the arch of the foot, the fit and comfort of your cycling shoes is enhanced, and common discomforts like hotspots, numbness and cramping are reduced or eliminated. Proper arch support can also improve pedaling power and efficiency on the bike.



WOMEN'S SUPERNATURAL FIT KIT SYSTEM FOOTBED

Adjustable arch support with cycling specific design.

X-Static® anti-microbial topsheet

SIZES:
36-37.5
38-39.5
40-41.5
42-43.5



MEN'S SUPERNATURAL FIT KIT SYSTEM FOOTBED

Adjustable arch support with cycling specific design.

X-Static® anti-microbial topsheet

SIZES:
39-40.5
41-42.5
43-44.5
45-46.5
47-48.5



NEW

PROLIGHT SLX II

FEATHER WEIGHT, PRO-LEVEL PERFORMANCE

With a minimalist design, ultra-light titanium hardware and a breathable *Evofiber™* upper that hugs your foot like a second skin, the *Prolight™ SLX II* redefines high-performance footwear. Our latest *Easton® EC90™* offers lightweight power transfer, and includes replaceable heel pads while maintaining an ultra-low 6.5mm stack height. The *SuperNatural Fit* footbed provides customizable arch support right out of the box to maximize comfort and power transfer, making this the most natural and direct connection to the pedals you can get.



Flourescent Orange / Black

UPPER:
Evofiber™ ultralight, breathable microfiber
Titanium offset strap “D-rings”
Updated patterning with low-profile straps

FOOTBED:
Ultralight SuperNatural Fit Kit with adjustable arch support
Ultralight footbed with adjustable arch support
X-Static® Antimicrobial fiber
Travel bag included

OUTSOLE:
Easton® EC90 SLX ACC high-modulus carbon
Titanium hardware
Replaceable heel pads

WEIGHT:
205 grams (size 42.5 with ultralight footbed)

SIZE:
39-50, including half-sizes from 39.5-46.5



Gloss White / White



Matte Black / Gloss White



Matte Black / Gloss Black

NEW

EMPIRE ACC

THE REDEFINITION OF PERFORMANCE AND STYLE

The **Empire™ ACC** continues to redefine high-performance cycling shoes. A classic laced closure offers unrivaled fit adjustment and complements the new, highly breathable **Evofiber™** microfiber upper for superb fit and comfort. A revamped **Easton® EC90™ ACC** full carbon sole offers all the stiffness needed for everything from Grand Tours to gran fondos, with ultra-low 6.5mm stack height for a direct connection to the pedals. Our adjustable **SuperNatural Fit** footbed lets you fine-tune the fit and arch support, for an unmatched blend of performance and style.



Matte Black / Highlight Yellow

UPPER:

One-piece upper design
 Premium Evofiber™ breathable microfiber
 Laced closure

FOOTBED:

SuperNatural Fit Kit with adjustable arch support
 X-Static® anti-microbial fiber

WEIGHT:

215 grams (size 42.5)

OUTSOLE:

Easton® EC90 ACC carbon fiber
 Replaceable heel pads

SIZE:

39-50, including half-sizes
 from 39.5-46.5



Matte Black / Flourescent Orange



White / Black



NEW

FACTOR ACC

COMFORT AND POWER GO THE DISTANCE

The **Factor™ ACC** optimizes comfort and power transfer for maximum pedaling efficiency. The superb fit starts with our breathable **Evofiber™** upper, which molds to the shape of your foot with the two-way micro-adjustment of our new **MR-1** low-profile buckle, allowing for precise adjustments on the fly. Our acclaimed **Easton® EC90™** carbon outsole is now lighter and stiffer than ever, with replaceable walking pads at the heel for enhanced durability. And with the adjustable **SuperNatural Fit** footbed and sizing up to 50, there's a fit to match practically every rider.

UPPER:

Evofiber™ lightweight microfiber upper
Low-profile micro-adjustable MR-1 ratcheting buckle closure (replaceable)
Offset strap "D-ring" at mid-foot

OUTSOLE:

Easton® EC90 ACC unidirectional carbon fiber
Replaceable heel pad

FOOTBED:

SuperNatural Fit Kit with adjustable arch support
X-Static® anti-microbial fiber

WEIGHT:

240 grams (size 42.5)

SIZE:

39-50, including half-sizes from 39.5-46.5



Red / White



Matte Black / Gloss Black



Matte White / Black





NEW

FACTOR ACC HV

COMFORT AND POWER, WITH MORE VOLUME

For riders with a wide foot or high instep, the **Factor™ HV ACC** optimizes comfort and power transfer for maximum pedaling efficiency. Our new, highly breathable **Evofiber™** upper conforms to the shape of your foot, with a two-way micro-adjustable **MR-1** buckle that allows for precise adjustments on the fly. Our latest **Easton® EC90™ ACC** carbon outsole is lighter than ever, with enhanced lateral and torsional stiffness plus replaceable heel pads for added durability. And with the adjustable support of our **SuperNatural Fit** footbed, there's no better connection to the pedals.



Matte Black / Gloss Black

UPPER:

Evofiber™ lightweight microfiber upper
Low-profile micro-adjustable MR-1 ratcheting buckle closure (replaceable)
Offset strap "D-ring" at mid-foot

OUTSOLE:

Easton® EC90 ACC unidirectional carbon fiber
Replaceable heel pad

FOOTBED:

SuperNatural Fit Kit with adjustable arch support
X-Static® anti-microbial fiber

WEIGHT:

240 grams (size 42.5)

SIZE:

39-48 High Volume, including half-sizes from 39.5-46.5



TRANS

AN UNBEATABLE COMBINATION OF FIT, PERFORMANCE AND VALUE

The *Trans*™ brings classic style and fit together with modern comfort and performance. It starts with a supple microfiber upper that conforms snugly to your foot, and a secure, micro-ratcheting buckle offers precise fit adjustment. Our acclaimed *SuperNatural* Fit footbed with *Aegis*® anti-microbial treatment provides adjustable arch support for a comfortable fit and direct connection to pedals via the *Easton*® *EC70*™ composite outsole. So you get smooth and efficient power to the pedal without aches and pains.

UPPER:

High-quality, breathable microfiber

Strong and secure ratcheting buckle closure (replaceable)

Offset strap "D-ring" at mid-foot

WEIGHT:

275 grams (size 42.5)

SIZE:

39-50, including half-sizes
from 39.5-46.5

OUTSOLE:

Easton® EC70 carbon composite

FOOTBED:

SuperNatural Fit Kit with adjustable arch support

Aegis® anti-microbial treatment



White / Black



Black / White



White / Red





TRANS HV

UNBEATABLE PERFORMANCE AND COMFORT FOR RIDERS WITH WIDE FEET AND HIGH INSTEPS

The *Trans™ HV* offers the same style and performance as our standard *Trans™*, with a fit tailored to high volume and extra-wide feet. The supple microfiber upper conforms to the natural shape of your foot, and a secure, micro-ratcheting buckle offers precise fit adjustment. Our acclaimed *SuperNatural Fit* footbed provides adjustable arch support for optimal comfort and an efficient connection to pedals via the *Easton® EC70™* composite outsole.



Black

UPPER:

High-quality, breathable microfiber

Strong and secure ratcheting buckle closure (replaceable)

Offset strap “D-ring” at mid-foot

WEIGHT:

275 grams (size 42.5)

SIZE:

39-48 High Volume, including half-sizes from 39.5-46.5

OUTSOLE:

Easton® EC70 carbon composite

FOOTBED:

SuperNatural Fit Kit with adjustable arch support

Aegis® anti-microbial treatment



MELE TRI

FAST AND FIT: THE BEST OF OUR TRI-SPECIFIC DESIGN

The *Mele™ Tri* offers a snug, supportive fit with breathability, power transfer and fast transition in mind. The upper features a wide throat opening with a stout upper strap for secure fit, as well as an integrated scuff guard at the heel. Our acclaimed *SuperNatural Fit* footbed with *Aegis®* anti-microbial treatment provides adjustable arch support to optimize fit and power transfer, creating a perfect complement to the best-in-class *Easton® EC70™* composite outsole.

UPPER:

High-quality, breathable microfiber
Strong and secure two-strap closure for power and fast transition

WEIGHT:

245 grams (size 42.5)

SIZE:

39-50, including half-sizes
from 39.5-46.5

OUTSOLE:

Easton® EC70 carbon composite

FOOTBED:

SuperNatural Fit Kit with adjustable arch support
Aegis® anti-microbial treatment



White



Obsidian / Highlight Yellow



Chrome / White

NEW



INCITER TRI

PRO-LEVEL FORM AND DETAIL AT AN UNSURPASSED VALUE

For a stylish, high-performance triathlon shoe that rivals pro-level shoes without the pro-level price, you can't beat the *Inciter™ Tri*. Features like a wide throat opening, a broad upper strap and an integrated scuff guard at the heel are specifically tailored to the demands of triathlons. And with a low-profile, custom-engineered nylon composite outsole, you get maximum energy transfer from every pedal stroke.



White / Black

UPPER:

High-quality, breathable microfiber and air mesh upper

Strong and secure two-strap closure for power and fast transition

OUTSOLE:

Injected nylon with Universal Cleat Mount (2 or 3 blot)

FOOTBED:

Molded EVA footbed with medium arch support

Aegis® anti-microbial treatment

WEIGHT:

260 grams (size 42.5)

SIZE:

39-50, including half-sizes
from 39.5 - 46.5



APECKX

TIMELESS STYLE WITH CLASS-LEADING PERFORMANCE

The *Apeckx*™ combines a supple microfiber upper with a stiffest-in-class *DuPont™ Zytel®* sole to create a shoe that rivals designs costing twice as much. Fit is adjustable via the classic combination of a micro-ratcheting buckle and two straps. A supportive, anti-microbial EVA footbed optimizes comfort while reducing odor. Plus, the *Apeckx*™ is built on the same last as our highest-performance shoes, so you get the same unrivaled fit that has made Giro the fastest-growing brand of cycling shoes.

UPPER:

High-quality, breathable microfiber

Strong and secure ratcheting buckle closure (replaceable)

Offset strap "D-ring" at mid-foot

OUTSOLE:

DuPont® Zytel™ nylon

FOOTBED:

Molded EVA footbed with medium arch support

Aegis® anti-microbial treatment

WEIGHT:

285 grams (size 42.5)

SIZE:

39-50, including half-sizes
from 39.5-46.5



Pure White / Black



Black



APECKX HV

A HINT OF CLASSIC STYLE, WITH FIT AND PERFORMANCE FOR WIDE FEET

The *Apeckx™ HV* offers the same style and performance as our standard *Apeckx™*, with fit and comfort tailored to high-volume and extra-wide feet. A supple microfiber upper with a stiffest-in-class *DuPont™ Zytel®* sole creates a shoe that rivals more expensive designs. Our micro-ratcheting buckle and two straps offer precise fit adjustment, while the anti-microbial footbed optimizes comfort and prevents odor. Its a great choice for riders who want a durable, comfortable shoe at a great price.



Black

UPPER:

High-quality, breathable microfiber

Strong and secure ratcheting buckle closure (replaceable)

Offset strap “D-ring” at mid-foot

WEIGHT:

275 grams (size 42.5)

SIZE:

39-48 High Volume, including half-sizes from 39.5-46.5

OUTSOLE:

DuPont® Zytel™

FOOTBED:

Molded EVA

Aegis® anti-microbial treatment



TERRITORY

BUILT FOR THE JOURNEY AND THE DESTINATION

The **Territory™** was conceived specifically for touring, gravel road riding and off-bike walkability. A traditional cycling upper with a ratcheting buckle and two adjustable straps gets more adventurous with the addition of a sturdy nylon outsole borrowed from our **Republic™** model. Walking pads provide traction on road, sidewalk and gravel surfaces, and are replaceable, to help ensure you'll still be heading out in these shoes after many adventures.



Black

UPPER:

High-quality, breathable microfiber

Strong and secure MR-2 ratcheting buckle closure (replaceable)

Offset strap "D-ring" at mid-foot

Reflective detailing

OUTSOLE:

Injected nylon with 2-bolt cleat mount

Replaceable, high-traction walking pads

Mid-foot scuff guard

FOOTBED:

Molded EVA footbed with medium arch support

Aegis® anti-microbial treatment

WEIGHT:

350 grams (size 42)

SIZE:

39-48, including half-sizes
from 39.5-46.5



Lead / Gum

REPUBLIC

INSPIRED BY ADVENTURE AND THE ROAD LESS TRAVELED

Cycling shoes can do more than just provide a great connection to the pedals—they can also get you where you want to go in comfort, confidence and style, both on the road and when the road ends. *The Republic™* combines a supple, perforated microfiber upper with a stout nylon outsole and high-traction walking pads for great pedaling efficiency, and for traction on roads, sidewalks and gravel when you're off the bike.

UPPER:

- High-quality, perforated microfiber upper
- Laced closure with non-slip laces
- Micro-suede heel counter

OUTSOLE:

- Injected nylon with 2-bolt cleat mount
- Replaceable, high-traction walking pads
- Mid-foot scuff guard

FOOTBED:

- Molded EVA footbed with microsuede top sheet and medium arch support
- Aegis® anti-microbial treatment

WEIGHT:

315 grams (size 42.5)

SIZE:

39-48, including half-sizes
from 39.5-46.5



Black / Gray



White / Black



Black / Gum

NEW

TREBLE II

POWER IN SIMPLICITY

Clean, modern style and a versatile, supportive form make the *Treble II*™ a popular choice for everything from spin classes to centuries. The upper is made of supple synthetic and adjusts quickly and precisely with three wide straps, while an *Aegis*® anti-microbial EVA footbed keeps you comfortable on longer rides. The stiff, injected nylon outsole is outfitted with our new *Universal Cleat Mount* system that accommodates both three-bolt and two-bolt cleat/pedal systems.

UPPER:

High-quality, breathable synthetic fiber

Classic 3-strap closure

OUTSOLE:

Injected nylon with Universal Cleat Mount (2 or 3 bolt)

FOOTBED:

Molded EVA footbed with medium arch support

Aegis® anti-microbial treatment

WEIGHT:

290 grams (size 42)

SIZE:

39-50 in whole sizes only



Black / White



White



NEW

GRYND

FIRST IN FLIGHT FOR SPIN CLASS AND BEYOND

With its athletic shoe-inspired look and cushioned EVA outsole, the **Grynd™** fits right in at the gym, but it was born to ride. The mesh and synthetic upper is supportive and breathable, and the nylon/EVA outsole with recessed cleat design will meet the needs of spinning enthusiasts, recreational riders and anyone who wants a solid, versatile cycling shoe for pedaling and walking, indoors and out.

UPPER:

Microfiber and mesh upper
Laced closure with lace keeper strap

OUTSOLE:

Molded SPD-compatible shank with optimized cleat zone
Molded EVA outsole with rubber walking zones

FOOTBED:

EVA midsole
Molded EVA footbed with medium arch support
Aegis® anti-microbial treatment

WEIGHT:

325 grams (size 42)

SIZE:

39-48 in whole sizes only



Silver / Fluorescent Orange



Black / White

A mountain biker wearing a blue helmet, black long-sleeved shirt, black pants, and white gloves is riding a blue and black trail bike over large, smooth, light-colored rocks on a dirt path. The rider is leaning forward, and the bike is positioned between two large rocks. The background shows a dirt trail winding through a wooded area with green foliage and trees. The scene is brightly lit, suggesting a sunny day.

DIRT FOOTWEAR





NEW

TERRADURO

PUT YOUR METTLE TO THE PEDAL

While most trail shoes are still based on XC racing, the new **Terraduro™** was created to navigate the demands of all-mountain riding, balancing on-and off-the-bike performance in a low-profile design. This durable shoe is built around a stout nylon shank that pedals like a pro XC shoe, combined with a grippy **Vibram®** rubber outsole that inspires confidence when scrambling over rocks and logs. The fit is secure and supportive thanks to a slim, micro-adjustable buckle and two-strap closure system, while a reinforced toe box offers protection from impacts

UPPER:

High-quality, breathable microfiber
Strong and secure MR-2 ratcheting buckle closure (replaceable)
Offset strap "D-ring" at mid-foot
Rubber toe cap

OUTSOLE:

Molded SPD-compatible shank with optimized cleat zone
Full Vibram® High-traction lugged outsole
Flexible forefoot zone for walking

FOOTBED:

Molded EVA footbed with medium arch support
Aegis® anti-microbial treatment

WEIGHT:

420 grams (size 42.5)

SIZE:

39-48, including half-sizes from 39.5-46.5



Glowing Red / Black



Black





CODE

TUNED FOR THE TRAIL

The Code™ is ideal for riders who want maximum power transfer plus the comfort and durability needed to withstand rugged trails and conditions. The light yet tough *Teijin®* microfiber upper shapes to your foot, and our adjustable *SuperNatural* Fit Kit allows you to tune the level of arch support, enhancing efficiency and comfort. Welded scuff guards boost the durability and structured feel, and the optimized *Easton® EC90™* unidirectional carbon sole provides pro-level stiffness for the most efficient power transfer available.



Black

UPPER:

Teijin® premium microfiber with welded scuff guards
 Strong and secure ratcheting buckle closure (replaceable)
 Offset strap “D-ring” at mid-foot
 Rubber nose guard

FOOTBED:

SuperNatural Fit Kit with adjustable arch support
 X-Static® anti-microbial fiber

WEIGHT:

355 grams (size 42.5)

OUTSOLE:

Easton® EC90 unidirectional carbon fiber
 High traction dual-density lugs
 Mid-foot scuff guard
 Accommodates steel toe spikes (included)

SIZE:

39-50, including half-sizes from 39.5-46.5



White / Black



Highlight Yellow



GAUGE

RACE-WORTHY PERFORMANCE AND OFF-ROAD COMFORT

The *Gauge™* is a performance-driven trail shoe with our exclusive *Easton® EC70™* carbon composite sole that delivers optimal power to the pedals, and a reinforced microfiber upper that's durable enough to be worn everyday. Fit adjustment is easy with a secure, micro-ratcheting buckle and two wide, offset straps that provide a snug, comfortable fit. The aggressively lugged, dual-density outsole offers excellent traction in the mud and dirt, and will also accept toe spikes for winter riding and 'cross racing.



Black / Highlight Yellow

UPPER:

Premium microfiber with welded scuff guards
Strong and secure ratcheting buckle closure (replaceable)
Offset strap "D-ring" at mid-foot
Rubber toe cap

FOOTBED:

SuperNatural Fit Kit with adjustable arch support
Aegis® anti-microbial treatment

WEIGHT:

345 grams (size 42)

OUTSOLE:

Easton® EC70 unidirectional carbon fiber
High traction lugged outsole
Mid-foot scuff guard
Accommodates steel toe spikes

SIZE:

39-50, including half-sizes
from 39.5-46.5



Black / Charcoal



White / Matte Black



GAUGE HV

TOP PERFORMANCE AND COMFORT FOR HIGH-VOLUME FEET

The *Gauge™ HV* is a performance-driven trail shoe with our exclusive *Easton® EC70™* carbon composite sole that delivers optimal power to the pedals, coupled with a reinforced microfiber upper that's durable enough to be worn every day. The fit is more generous than our standard *Gauge™*, with adjustment via a secure, micro-ratcheting buckle and two wide, offset straps. An aggressively lugged, dual-density outsole offers excellent traction in the mud and dirt, and will also accept toe spikes for winter riding.



Black

UPPER:

Premium microfiber with welded scuff guards

Strong and secure ratcheting buckle closure (replaceable)

Offset strap "D-ring" at mid-foot

Rubber toe cap

OUTSOLE:

Easton® EC70 unidirectional carbon fiber

High traction lugged outsole

Mid-foot scuff guard

Accommodates steel toe spikes

FOOTBED:

SuperNatural Fit Kit with adjustable arch support

Aegis® anti-microbial treatment

WEIGHT:

345 grams (size 42)

SIZE:

39-48, including half-sizes from 39.5-46.5



PRIVATEER

FIT AND PERFORMANCE THAT RIVALS THE BEST

The *Privateer*™ combines a supple microfiber upper with two straps and a micro-ratcheting buckle, a reinforced toe box and a stiffest-in-class nylon outsole that rivals the performance of more expensive composite designs. Aggressive, dual-density lugs give excellent traction in dirt and mud, and can be outfitted with toe spikes. A supportive EVA footbed with *Aegis*® anti-microbial treatment enhances comfort and fit. If you need a shoe that stands up to hard riding and racing, this is the one.

UPPER:

High-quality, breathable microfiber
Strong and secure ratcheting buckle closure (replaceable)
Offset strap “D-ring” at mid-foot
Rubber toe cap

OUTSOLE:

DuPont® Zytel™ nylon
High traction lugged outsole
Mid-foot scuff guard
Accommodates steel toe spikes

FOOTBED:

Molded EVA footbed with medium arch support
Aegis® anti-microbial treatment

WEIGHT:

345 grams (size 42.5)

SIZE:

39-48, including half-sizes
from 39.5-46.5



Glowing Red / Black



Black / Gum



PRIVATEER HV

OUR MOST VERSATILE TRAIL SHOE FOR HIGH-VOLUME FEET

The *Privateer™ HV* offers the same performance as our standard *Privateer™*, with fit tailored for high volume and extra-wide feet. A supple microfiber upper with a micro-ratcheting buckle, two straps and a reinforced toe box combines with a stiffest-in-class nylon outsole that rivals the performance of more expensive composite designs. Aggressive, dual-density lugs give excellent traction in dirt and mud, and can be outfitted with toe spikes. A supportive EVA footbed with *Aegis®* anti-microbial treatment enhances comfort and fit.



Black / Gum

UPPER:

High-quality, breathable microfiber
Strong and secure ratcheting buckle closure (replaceable)
Offset strap “D-ring” at mid-foot
Rubber toe cap

OUTSOLE:

DuPont® Zytel™ nylon
High traction lugged outsole
Mid-foot scuff guard
Accommodates steel toe spikes

FOOTBED:

Molded EVA footbed with medium arch support
Aegis® anti-microbial treatment

WEIGHT:

345 grams (size 42.5)

SIZE:

39-48 High Volume, including half-sizes from 39.5-46.5



CHAMBER MID

CLIP IN AND RIP IT

Our quest to build the ultimate downhill shoe has led us to the **Chamber™** Mid. Based on the original **Chamber™**, developed in collaboration with **Aaron Gwin**, this version offers a supportive mid-top design combined with acclaimed **Vibram® Megagrip** outsole for aggressive riders who need pedaling stiffness, grip and durability. Mud and debris are kept out thanks to the internal bootie construction, and the EVA midsole with **Poron® XRD™** heel cushioning helps protect against shock and impact.



Black / Gum

UPPER:

- Asymetric high-top design
- High-quality, synthetic leather
- Laced closure with lace keeper strap
- Internal "bootie" construction system
- Rubber toe cap
- Water resistant design

OUTSOLE:

- Molded SPD-compatible shank with optimized cleat zone
- Vibram® MegaGrip™ rubber outsole

FOOTBED:

- EVA midsole with Poron® XRD™ heel cushioning
- Molded EVA footbed with medium arch support
- Aegis® anti-microbial treatment

WEIGHT:

576 grams (size 42)

SIZE:

37-48 in whole sizes only



CHAMBER

DOWNHILL DONE RIGHT

The perfect downhill shoe—that was the goal when we collaborated with **Aaron Gwin** to develop the **Chamber™**. It has a skate-inspired, street shoe look with a low-profile upper and an internal bootie that secures the foot and keeps mud, rocks and other debris out. An EVA midsole, **Poron® XRD™** heel cushioning and a dual-density **Vibram®** rubber outsole dial in the comfort and support you need to take the A-line on any trail or track.

UPPER:

- Low-profile design
- High-quality, synthetic leather
- Laced closure with lace keeper strap
- Internal “bootie” construction system
- Rubber toe cap

OUTSOLE:

- Molded SPD-compatible shank with optimized cleat zone
- Vibram® MegaGrip™ rubber outsole

FOOTBED:

- EVA midsole with Poron® XRD™ heel cushioning
- Molded EVA footbed with medium arch support
- Aegis® anti-microbial treatment

WEIGHT:

536 grams (size 42)

SIZE:

37-48 in whole sizes only



White



Black / Gum



JACKET MID

NEVER MET AN AIR IT DIDN'T LIKE

Dirt jumps, digging and downhill bombing are in the *Jacket™ Mid's* DNA. Based on our popular *Jacket™* shoe, with the same low-profile styling, protective cushioning and flex-tuned bottom shank, it blends in the support of a mid-top design. The hard-wearing *Vibram® HydroGrip* rubber outsole offers great pedal feedback, while still maintaining exceptional grip in all weather conditions.



Black

UPPER:

- Asymetric high-top design
- High-quality, synthetic leather
- Laced closure with lace keeper strap
- Internal "bootie" construction system
- Rubber toe cap
- Water-resistant design

FOOTBED:

- EVA midsole with Poron® XRD™ heel cushioning
- Molded EVA footbed with medium arch support
- Aegis® anti-microbial treatment

WEIGHT:

445 grams (size 42)

OUTSOLE:

Vibram® MegaGrip™ rubber outsole with engineered lugs at pedal zone

SIZE:

37-48 in whole sizes only



JACKET

FOR THE LOVE OF DIRT, SPEED AND AIR

Geared right for dirt jumps, drops and downhill runs, the **Jacket™** features a low-profile upper with a flex-tuned bottom shank and a **Vibram®** rubber outsole engineered for exceptional pedal grip. EVA in the midsole cushions against shock, and a **Poron® XRD™** heel pad helps minimize the impact of hard landings and bailouts.

UPPER:

- Low-profile design
- High-quality, synthetic leather
- Laced closure with lace keeper strap
- Internal “bootie” construction system
- Rubber toe cap

OUTSOLE:

- Vibram® MegaGrip™ rubber outsole with engineered lugs at pedal zone

FOOTBED:

- EVA midsole with Poron® XRD™ heel cushioning
- Molded EVA footbed with medium arch support
- Aegis® anti-microbial treatment

WEIGHT:

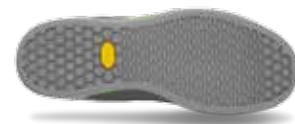
416 grams (size 42)

SIZE:

37-48 in whole sizes only



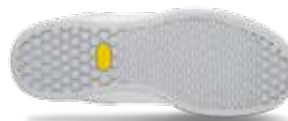
Black / White



Gray / Green



Army / Glowing Red / Gum



White / Gray



Gray / Gum



CARBIDE

DURABLE COMFORT, WITH BEST-IN-CLASS PERFORMANCE

The *Carbide™* is a tough yet supple trail shoe with the same comfortable, supportive fit and classic form found in our premium shoes. The upper is made of supple synthetic leather with three wide straps that allow simple, precise fit adjustments. A supportive EVA footbed with *Aegis®* anti-microbial treatment enhances fit and comfort, while a stout injected nylon sole helps transfer power to the pedals instantly. It's a great choice for riders who want inspired style and performance at a modest price.



Lead / White

UPPER:

High-quality, breathable synthetic fiber

Classic 3-strap closure

OUTSOLE:

Injected nylon

High traction lugged outsole

Mid-foot scuff guard

Accommodates steel toe spikes

FOOTBED:

Molded EVA footbed with medium arch support

Aegis® anti-microbial treatment

WEIGHT:

325 grams (size 42)

SIZE:

39-48 in whole sizes only



Black / Charcoal



Black / Highlight Yellow



RUMBLE

BEST FOOT FORWARD

The versatile **Rumble™** combines high-performance riding details with the walkability and comfort of a light hiking shoe. Made from durable synthetic, the **Rumble** uses non-slip laces so you get a precise, easy-to-adjust fit. For added comfort and support, an EVA footbed and an injected inner shank transfer power to the pedals without compromising the flexibility you need when you're walking on the trail. Features a lug outsole for optimal traction on almost any trail or road

UPPER:

Premium synthetic
Non-slip laces with hidden lace holder to eliminate snags

OUTSOLE:

Injected internal shank provides good pedaling stiffness, with flex where you need it
Injected rubber with aggressive lugs for traction in dirt and mud
Accommodates SPD® clipless pedals, flat pedals or toe-clips/straps

FOOTBED:

Molded EVA footbed with medium arch support

WEIGHT:

445 grams (size 42)

SIZE:

39-48 in whole sizes only



Black



Brown / Tan

WOMEN'S FOOTWEAR





FACTRESS

THE FINEST PERFORMANCE ON THE OPEN ROAD

The **Factress™** offers exceptional performance, with luxurious style and fit tailored for women. The **Teijin®** microfiber upper conforms to the foot without binding, and our adjustable **SuperNatural** Fit Kit allows you to customize your arch support to enhance pedaling comfort and efficiency. At only 6.5mm thin, the **Easton® EC90™** unidirectional carbon outsole provides a direct connection to the pedal that helps turn every ounce of energy into forward motion.

UPPER:

Teijin® premium lightweight microfiber

Strong and secure ratcheting buckle closure (replaceable)

Offset strap "D-ring" at mid-foot

OUTSOLE:

Easton® EC90 unidirectional carbon fiber

FOOTBED:

SuperNatural Fit Kit with adjustable arch

X-Static® Anti-Microbial

WEIGHT:

230 grams (size 39)

SIZE:

36-43, including half-sizes from 37.5-42.5



White / Silver / Milky Blue



Black / White



ESPADA

PERFORMANCE, COMFORT AND STYLE THAT REDEFINES YOUR RIDE

The elegant style and luxurious fit of the women's *Espada*™ are the result of a tailored microfiber upper that cradles your foot, and a secure, micro-ratcheting buckle that offers precise fit adjustment. Our supportive *SuperNatural* Fit footbed with *Aegis*® anti-microbial treatment allows custom adjustment of the arch support to enhance comfort and provides the best platform possible for transferring power. The *Easton*® *EC70*™ composite outsole is light yet stiff, and rivals the performance of more expensive shoes, without the more expensive price.

UPPER:

High-quality, breathable microfiber
Strong and secure ratcheting buckle closure (replaceable)
Offset strap "D-ring" at mid-foot

WEIGHT:

245 grams (size 39)

SIZE:

36-43, including half-sizes
from 37.5-42.5

OUTSOLE:

Easton® EC70 carbon composite

FOOTBED:

SuperNatural Fit Kit with adjustable arch support
Aegis® anti-microbial fiber



Patent Black / Silver



White / Blue



FACET TRI

COOL AND COMFORTABLE, WITH MAXIMUM POWER TRANSFER

The women's *Facet™ Tri* starts with a tailored microfiber and air mesh upper that hugs your foot securely, and adds tri-specific features including a wide opening with a broad upper strap, an integrated scuff guard at the heel and a looped heel pull to ensure quick, comfortable transitions. Our acclaimed *SuperNatural* Fit footbed with *Aegis®* anti-microbial treatment and adjustable arch support offers superb comfort while resisting odor. Most importantly, you get a direct, powerful connection to pedals via the *Easton® EC70™* composite outsole that puts your full power into motion.



Patent White / Rhodamine Red

UPPER:

High-quality, breathable microfiber
Strong and secure two-strap
closure for power and fast transition

WEIGHT:

220 grams (size 39)

SIZE:

36-43, including half-sizes
from 37.5-42.5

OUTSOLE:

Easton® EC70 carbon composite

FOOTBED:

SuperNatural Fit Kit with
adjustable arch support
Aegis® anti-microbial treatment

NEW

FLYNT TRI

UNPARALLELED FIT AND FEEL FOR TRIATHLON

The lightweight *Flynt™ Tri* is contoured for a women's-specific fit and built with details that make the difference for triathletes. A wide throat opening and broad adjustable straps create a precision fit that isn't restrictive, and a loop heel pull makes for fast, easy transitions to the bike. The engineered nylon outsole has a low stack height, creating a direct connection to your pedals for a sure, efficient stroke.

UPPER:

High-quality, breathable microfiber and air mesh upper

Strong and secure two-strap closure

OUTSOLE:

Injected nylon with Universal Cleat Mound (2 or 3 bolt)

FOOTBED:

Molded EVA footbed with medium arch support

Aegis® anti-microbial treatment

WEIGHT:

230 grams (size 39)

SIZE:

36-43, including half-sizes
from 37.5-42.5



Silver / White / Milky Blue





SOLARA

THE COMFORT AND STYLE OF PREMIUM SHOES, WITHOUT A PREMIUM PRICE

The **Solara™** is built with the same comfortable fit as our premium shoes, with a supple microfiber upper and a micro-ratcheting buckle that offers very precise fit adjustment. A supportive EVA footbed with **Aegis®** anti-microbial treatment is matched with our stiff **DuPont® Zytel™** nylon outsole to create a more efficient, powerful platform for transferring energy to the pedals without binding or hotspots. It's the perfect choice for enthusiasts or recreational riders who are on the road to becoming dedicated cyclists.

UPPER:

High-quality, breathable microfiber
Strong and secure ratcheting buckle closure (replaceable)
Offset strap "D-ring" at mid-foot

WEIGHT:

270 grams (size 39)

SIZE:

36-43, including half-sizes
from 37.5-42.5

OUTSOLE:

DuPont® Zytel™ nylon

FOOTBED:

Molded EVA footbed with medium arch support
Aegis® anti-microbial treatment



Black / Milky Blue



Gunmetal / Berry



Patent White / Silver



NEW

SANTE II

SIMPLE ELEGANCE FOR THE OPEN ROAD

Timeless style and a comfortable, supportive fit make the women's *Sante™ II* a popular choice for recreational riders. A supple synthetic upper adjusts quickly and precisely with three wide straps, and an *Aegis®* anti-microbial EVA sockliner underfoot stays comfortable through extended pedaling. The stiff injected nylon outsole is outfitted with our new *Universal Cleat Mount* system that accommodates both three-bolt and two-bolt cleat/pedal systems for easy integration with whatever pedals you prefer.

UPPER:

High-quality, breathable synthetic fiber

Classic 3-strap closure

OUTSOLE:

Injected nylon with Universal Cleat Mount (2 or 3 bolt)

FOOTBED:

Molded EVA footbed with medium arch support

Aegis® anti-microbial treatment

WEIGHT:

230 grams (size 39)

SIZE:

36-43 in whole sizes only



White / Black / Milky Blue



Black / White



REVEILLE

A SHOE FOR ADVENTUROUS SPIRITS

The women's *Reveille*™ is primed to take on day tours and road-to-nowhere excursions with ease. A sturdy nylon outsole provides two-bolt cleat compatibility and optimum pedaling stiffness, while the replaceable walking pads add off-bike traction and stability. Styling is suited to the spirit of the modern cyclo-explorer, with a two-strap upper and ratcheting buckle for snug, secure fit and easy adjustment.



Black / Milky Blue

UPPER:

High-quality, breathable microfiber
Strong and secure MR-2 ratcheting buckle closure (replaceable)

Offset strap "D-ring" at mid-foot

Reflective detailing

OUTSOLE:

Injected nylon with 2-bolt cleat mount

Replaceable, high-traction walking pads

Mid-foot scuff guard

FOOTBED:

Molded EVA footbed with medium arch support

Aegis® anti-microbial treatment

WEIGHT:

335 grams (size 39)

SIZE:

36-43, including half-sizes from 37.5-42.5

NEW



CIVILA

AN ADVENTURE SHOE OF A DIFFERENT BREED

A recreational riding favorite, the women's *Civila*™ is hardworking enough to get you where you're going, yet it remains stylish and walkable once you get there. A low-profile microfiber lace-up construction blends seamlessly with streetwear, and high-traction walking pads on the firm nylon outsole make for a sure-footed experience on the pedals or on the trail. Our *Performance Fit* last helps the *Civila*™ stay as comfortable at mile 30 as it was at mile 1.



Black / White / Milky Blue

UPPER:

High-quality, perforated microfiber upper
Laced closure with non-slip laces
Micro-suede heel counter

FOOTBED:

Molded EVA footbed with microsuede top sheet and medium arch support
Aegis® anti-microbial treatment

OUTSOLE:

Injected nylon with 2-bolt cleat mount
Replaceable, high-traction walking pads
Mid-foot scuff guard

WEIGHT:

275 grams (size 39)

SIZE:

36-43 in whole sizes only



NEW

WHYND

READY FOR A SPIN

The *Whynd*™ has indoor and recreational cycling in mind with athletic-inspired lace-up styling in mesh and synthetic leather. A grippy EVA outsole with a stout nylon shank and a recessed cleat pocket allows you to lock into your pedal stroke, without sacrificing off-bike walkability. This women's shoe is a solid, versatile choice for times when you need agility in and out of the saddle, and it can transition from gym ride to occasional joy rides with ease and style.

UPPER:

Microfiber and mesh upper
Laced closure with lace keeper strap

OUTSOLE:

Molded SPD-compatible shank with optimized cleat zone
Molded EVA outsole with rubber walking zones

FOOTBED:

EVA midsole
Molded EVA footbed with medium arch support
Aegis® anti-microbial treatment

WEIGHT:

325 grams (size 39)

SIZE:

36-43 in whole sizes only



Silver / Rhodamine Red



Black / White / Milky Blue





WOMEN'S DIRT FOOTWEAR



Color / Color / Color



SICA

AN ELEGANT DESIGN THAT TAMES THE TRAILS

With superb comfort and performance that stand out on any trail, the women's *Sica*™ features a supple, breathable microfiber upper that wraps snugly around your foot. External welded scuff guards further enhance structure and durability. Dial in the fit with a secure micro-ratcheting buckle and two wide, offset straps that give a secure, comfortable fit without creating pressure points. The *Easton® EC70™* carbon composite lug outsole offers excellent traction in the mud and dirt, and will also accept toe spikes for winter riding and 'cross racing.

UPPER:

High-quality microfiber with welded scuff guards

Strong and secure ratcheting buckle closure (replaceable)

Offset strap "D-ring" at mid-foot
Rubber toe cap

OUTSOLE:

Easton® EC70 carbon composite
High traction lugged outsole
Mid-foot scuff guard
Accommodates steel toe spikes

FOOTBED:

SuperNatural Fit Kit with adjustable arch support

Aegis® anti-microbial treatment

WEIGHT:

305 g (size 39)

SIZE:

36-43, including half-sizes from 37.5-42.5



Black / Teal



White / Rhodamine Red



NEW

TERRADURA

SOLID FOOTING UP AND DOWN THE MOUNTAIN

The *Terradura*™ blends walkability, durability and pedaling stiffness for a more versatile version of a race-inspired shoe. A robust *Vibram*® lug outsole grips pedals and various surfaces—mud, logs, rocks—with equal dexterity. The supple microfiber upper is tailored for a woman's foot and features a micro-ratcheting buckle and two-strap closure system that adjusts quickly and easily to tune the fit. A reinforced toe box gives impact protection where and when it's needed most.



Black / Dynasty Green

UPPER:

High-quality, breathable microfiber
Strong and secure MR-2 ratcheting buckle closure (replaceable)
Offset strap "D-ring" at mid-foot
Rubber toe cap

FOOTBED:

Molded EVA footbed with medium arch support
Aegis® anti-microbial treatment

WEIGHT:

410 grams (size 39)

OUTSOLE:

Molded SPD-compatible shank with optimized cleat zone
Full Vibram® high-traction lugged outsole
Flexible forefoot for walking

SIZE:

36-43, including half-sizes from 37.5-42.5



MANTA

FOR THE LOVE OF DIRT AND MUD

The women's *Manta*™ is a true performance mountain bike shoe, combining a supple microfiber upper with a stout nylon outsole, comparable in stiffness to shoes with more expensive carbon fiber plates. Aggressive dual-density lugs deliver excellent traction in dirt and mud. A supportive EVA footbed with *Aegis*® anti-microbial treatment enhances comfort, offering the same great feel as our premium shoes.

UPPER:

High-quality, breathable microfiber
 Strong and secure ratcheting buckle closure (replaceable)
 Offset strap "D-ring" at mid-foot
 Rubber Toe Cap

OUTSOLE:

DuPont® Zytel™ nylon
 High traction lugged outsole
 Mid-foot scuff guard
 Accommodates steel toe spikes

FOOTBED:

Molded EVA footbed with medium arch support
 Aegis® anti-microbial treatment

WEIGHT:

305 grams (size 39)

SIZE:

36-43, including half-sizes
 from 37.5-42.5



Black / Silver



White / Rhodamine Red



Black / White



RIELA

TAKE ON THE TRAILS IN COMFORT

The women's *Riela*™ is a rugged trail shoe with the comfortable, supportive fit that Giro is known for. A high-grade synthetic leather upper features three wide straps for simple yet precise fit adjustments. A supportive EVA footbed with *Aegis*® anti-microbial treatment enhances fit and comfort, while a stout injected nylon sole helps transfer power to the pedals instantly. It's a great choice for riders who want a shoe that blends inspired style, high performance and modest price.

UPPER:

High-quality, breathable synthetic fiber
Classic 3-strap closure

OUTSOLE:

Injected nylon
High traction lugged outsole
Mid-foot scuff guard
Accommodates steel toe spikes

FOOTBED:

Molded EVA footbed with
medium arch support
Aegis® anti-microbial treatment

WEIGHT:

290 grams (size 39)

SIZE:

36-43 in whole sizes only



Black / Rhodamine Red



White / Black / Dynasty Green



PETRA

DESIGNED FOR ADVENTURE ON AND OFF THE BIKE

The versatile **Petra™** is comfortable on and off the trail and the bike, combining high-performance riding details with the walkability and comfort of a light women's hiking shoe. Colorful, non-slip laces create a precise, easy-to-adjust fit, and for added support an EVA footbed with an injected inner shank transfers power to the pedals without compromising the flexibility you need when you're walking on the trail. Features a lug rubber outsole for optimal traction on almost any trail or road.

UPPER:

Breathable microfiber with durable synthetic

Non-slip laces with hidden lace holder to eliminate snags

OUTSOLE:

Injected internal shank provides good pedaling stiffness, with flex where you need it

Injected rubber with aggressive lugs

Accommodates SPD® clipless pedals, flat pedals or toe-clips / straps

FOOTBED:

Molded EVA footbed with medium arch support

WEIGHT:

395 grams (size 39)

SIZE:

36-43 in whole sizes only



Charcoal / Soda



Black / Dynasty Green

WHAT IS DIFFERENT ABOUT GIRO FOOTWEAR?

A lot. From our emphasis on fit comfort and adjustability, to the use of premium materials like **Easton**[®] carbon fiber and **Vibram**[®] rubber outsoles, to the range of colors and styles we offer; Giro™ stands apart in cycling footwear. But the most important difference is our fit.

Fit is more than a set of numbers, it's a feeling. That is why we believe in providing cycling shoes that combine a cycling-specific fit with a neutral platform (no varus or valgus adjustment built-in) and a range of sizes and styles that allow adjustments based on every rider's individual needs.

HOW DO GIRO SHOES FIT COMPARED TO OTHER BRANDS?

Giro cycling shoes are designed for a precise fit – one that is snug and supportive in the heel, mid-foot, and instep areas, with a little more volume in the forefoot and toe box for natural feel and comfort. We offer our shoes in a full range of sizes, including Women's Fit and High Volume Fit (for wide feet and high insteps) and half-sizes in most models. (See page 128 for complete footwear size conversion charts.)

WHAT ARE THE DIFFERENCES BETWEEN MEN'S FIT AND WOMEN'S FIT?

Giro Women's Fit shoes have a lower instep volume, a lower forefoot girth and a narrower heel than our men's / unisex shoes.

DOES GIRO OFFER SHOES FOR EXTRA WIDE FEET OR VERY HIGH INSTEPS?

Yes. We offer 5 models (Gauge™ HV, Privateer™ HV, Factor HV ACC, Trans™ HV and Apeckx™ HV) in our "HV" fit to accommodate riders with extra wide (up to EE width) feet, or very high instep heights. The difference between our standard fit and our HV fit is that the girth of the upper from the forefoot to the instep is larger, and the straps are longer to allow proper fit adjustment. The outsole plate is not different, only the upper.

ARE GIRO SHOES HEAT-MOLDABLE?

No. Every Giro shoe is made with a tailored upper that hugs the foot naturally and is supple enough to wrap to the contours of your foot for a supportive, precise fit without heating.

WILL GIRO SHOES WORK WITH CUSTOM ORTHOTICS?

Every Giro shoe is made to accommodate a wide variety of footbeds, as well as internal and external wedge adjustments and some custom orthotics. That said, orthotics vary widely, and we cannot guarantee a good fit. We recommend that you consult with your orthopedist or a fit expert to evaluate the fit and your best options.

WHAT IS THE SUPERNATURAL FIT SYSTEM?

The SuperNatural Fit system combines a thin, cycling specific footbed with an adjustable arch support system. This system allows riders to custom-tune their arch support and fit right out of the box, without any tools or hassles. By properly supporting the arch, fit and comfort of cycling shoes is enhanced and common discomforts like hotspots, numbness and cramping are reduced or eliminated. Proper arch support can also improve pedaling power and efficiency on the bike.

WHAT ARE THE BENEFITS OF SUPERNATURAL FIT?

Low-profile, cycling-specific footbeds support the entire foot and accommodate a wide range of internal and external fit adjustments. They also keep the rider's heel locked down in the shoe and minimize stack height to the pedal, for efficient power transfer.

Rider-adjustable arch support system enhances fit, comfort and can enhance pedaling efficiency. Low, Medium and High arch supports are independently adjustable, and easy to swap out for a customized level of fit and support adjustment.

X-Static[®] fibers in the footbed feature natural silver with anti-microbial properties to fight odors and bacteria (note some footbed models use an

anti-microbial treatment instead of X-Static[®] fibers).

HOW DO I DETERMINE THE AMOUNT OF ARCH SUPPORT I NEED?

With adjustable SuperNatural Fit Kit footbeds, you can choose from the three different arch supports to customize the fit and feel of your shoes. We generally recommend that you use a level of arch support that most closely matches to the contours of your arches or the footbed of your existing cycling shoes, and provides you with the most comfortable fit in the shoe. Once you've tried that, you can make adjustments or work with an expert as needed to maximize comfort and enhance fit.

To adjust the arch support for best fit and maximum comfort, simply follow these guidelines:

1. If you purchased footbeds separately from your shoes, make sure the footbed is the correct size for your shoes. You may need to trim the footbed to ensure that it fits properly in the shoe.
2. Try the shoe with the stock Medium (orange color) arch support installed, and notice how it feels. You may want to ride with the stock setting to see how it feels during a normal ride.
3. If the arch feels too high (arch presses uncomfortably into your foot) or too low (arch feels unsupported or flat) you may want to try a different level of arch support.
4. To change the level of support, simply remove the footbed from the shoe and peel off the arch support attached to the bottom of the footbed. Then install a different arch support based on your desire for more or less arch support.

WHY CHOOSE CYCLING-SPECIFIC FOOTBEDS WITH PROPER ARCH SUPPORT?

Cycling is a unique activity. When you pedal a bicycle, your feet do not strike the ground; therefore your feet do not encounter the same forces and impacts as they do when you walk

or run. Therefore, there is less need for cushioning and more emphasis on proper arch support to enhance comfort and pedaling efficiency.

WHAT ARE "VALGUS" (PRONATION) AND "VARUS" (SUPINATION)? HOW DO THEY AFFECT PEDALING COMFORT AND EFFICIENCY?

Valgus is the tendency of the foot to lean inward at the ankle. Varus is the tendency of the foot to roll outward at the ankle.

Either of these tendencies can cause aches and pain in the forefoot and arch, and in some cases negatively affect a rider's pedaling comfort and efficiency. All Giro footwear provides the capability for you to adjust or replace footbeds, and to work with a properly-trained fitter to make adjustments that will enhance your comfort and performance if needed.

WHAT IS DIFFERENT ABOUT EASTON[®] OUTSOLES?

The outsole is where human power is transformed to forward motion through the pedal. By working closely with the engineers at **Easton**, we were able to create proprietary outsoles that maintain an optimal stiffness profile while minimizing weight and stack height, which can improve performance and efficiency without compromising comfort.

WHAT ARE THE BENEFITS OF GIRO'S EXCLUSIVE EASTON OUTSOLES?

- Proprietary design is optimized to match our last, for a better fit to the shoe and your foot.
- Engineered to enhance stiffness exactly where you need it, while minimizing weight and thickness where you don't want it.
- A "flat edge" profile doesn't wrap up against the foot. This allows the shoe's upper to contour to the foot with a precise, natural feel that doesn't pinch or bind.
- Optimized materials and layouts provide best-in-class performance and durability.



- Very thin 6.5 mm stack height maintains a natural feel with the bike, and a direct connection with the pedal for maximum efficiency.

WHAT ARE THE DIFFERENCES BETWEEN THE DIFFERENT OUTSOLES?

Easton EC90 SLX ACC is 100% uni-directional carbon with high modulus fibers. It is our lightest, highest level of performance and also features titanium cleat hardware inserts.

Easton EC90 ACC is made of 100% unidirectional carbon. It has pro-level stiffness similar to the EC90 SLX ACC outsole, but is slightly heavier.

Easton EC70 carbon composite outsoles are a blend of carbon and fiberglass. They are light and stiff with performance and value that exceeds many carbon outsoles.

DuPont® Zytel™ outsoles are made of a special nylon composite that is stiffer and more durable than traditional nylon outsoles. Our Zytel soles are not as stiff as our premium carbon or composite outsoles, but they offer class-leading performance with less weight.

Our basic nylon composite outsoles are made of a high-quality nylon composite that offers great performance and value, while taking advantage of the same carefully-engineered molds as our higher-end DuPont nylon soles.

Vibram® MegaGrip™ outsoles use an engineered rubber compound developed for great grip on a variety of surfaces, with the durability needed to resist breaking down quickly from the pins on flat pedals.

Vibram® HydraGrip™ outsoles feature a proprietary rubber compound developed for exceptional grip on a variety of surfaces, especially in slippery conditions, with hard-wearing durability.

Vibram® Mont™ outsoles use a tried-and-true formulation that is known for exceptional durability with great grip on a variety of outdoor surfaces.

DOES GIRO OFFER A SPEED-PLAY™-SPECIFIC OUTSOLE DRILLING?

No, but Speedplay's adapters are compatible with Giro shoes.

DOES GIRO OFFER REPLACEMENT LUGS OR WALKING PADS FOR THEIR SHOES?

Yes, some models feature replaceable lugs for 2014 including: Prolight™ SLX II ACC, Factor™ ACC, Empire™ ACC, Republic™, Civila™, Territory™, Reveille™

DOES GIRO OFFER REPLACEMENT TOE SPIKES?

Yes. The Code™ model shoe ships with toe spikes, and they are replaceable as well. All Giro shoes that are toe-spike compatible use the same toe spike.

HOW DO I MAINTAIN GIRO FOOTWEAR?

When properly cared for, your new Giro cycling shoes will offer many miles of performance.

- To clean shoes, hand wash with mild soap and hang dry.
- Do not wash shoes in a washing machine or use strong detergents, abrasive pads or brushes.
- Do not expose shoes to extreme heat. Using a heater, radiator, campfire, blow dryer or other heat source to dry your shoes can damage them and void warranty.
- If shoes become wet, you can stuff them with newspaper to help absorb moisture and maintain shape. In most cases newspaper will dry wet shoes overnight.

WHAT KIND OF WARRANTY DOES GIRO OFFER?

Any Giro shoe determined by Giro to be defective in materials or workmanship within one (1) year from the date of original purchase will be repaired or replaced, at Giro's option, free of charge when received at the factory freight prepaid, together with proof of purchase. If you have questions regarding the condition of your helmet or the warranty coverage on your helmet, contact us or refer to the helmet owner's manual before sending your helmet in for inspection or replacement consideration.

