
1 **2015 BIKE**
SHOP MANUAL





PHOTO: JOSH SAWYER

1 PURPOSE BUILT

Before sketches, models or molds are made—we focus on one thing: **Purpose**. Every helmet has one.

We believe that the only way to create great products is to live and breathe in the cultures we serve. Unlike the spectator sports of the masses, we play in an arena where the biggest fans are also the biggest participants. Concepting, designing, engineering and testing—it's all tied together by one common question: *who are we building for and what is their purpose?* Different helmets provide different answers. Whatever your riding style, we have you covered—literally.

PAVEMENT — 2

- ROAD RACE..... 4
 - STAR PRO..... 6
 - GAGE..... 12
 - VOLT RL..... 14
 - JAVELIN..... 16
- ROAD SPORT..... 18
 - OVERDRIVE..... 20
 - ARRAY..... 22
 - EVENT..... 24
 - SOLAR..... 26

DIRT — 28

- ALL-MOUNTAIN..... 30
 - SUPER 2R..... 32
 - SUPER 2..... 36
 - STOKER..... 38
- XC/RACE..... 40
 - VOLT XC..... 42
 - SEQUENCE..... 44
 - EVENT XC..... 46
- FULL-FACE..... 48
 - FULL-9..... 50
 - TRANSFER-9..... 54
 - SANCTION..... 56

LIFESTYLE — 58

- ACTION..... 60
 - FULL FLEX..... 62
 - REFLEX..... 66
 - SEGMENT..... 68
- URBAN..... 72
 - INTERSECT..... 74
 - MUNI..... 76
- ACTIVE..... 78
 - SLANT..... 80
 - SOFT BRIM PISTON & STRUT..... 82
 - PISTON..... 84
 - STRUT..... 86
 - XLP..... 88
 - SOLAR FLARE..... 90
 - SOLARA..... 92
 - PRESIDIO..... 94
- YOUTH..... 96
 - OCTANE..... 98
 - TRIGGER..... 100
 - SHASTA..... 102
 - SEGMENT JR..... 104
 - BUZZ..... 108
 - ZIPPER..... 110
 - BELLINO..... 112
- TECH GLOSSARY..... 114

▲ WARNING: Bicycling is a dangerous sport which may result in serious injury or even death. For proper use of your helmet, please refer to the owner's manual.



PAVEMENT





ROAD RACE HELMETS

UNCOMPROMISING SPEED



The Star Pro Story

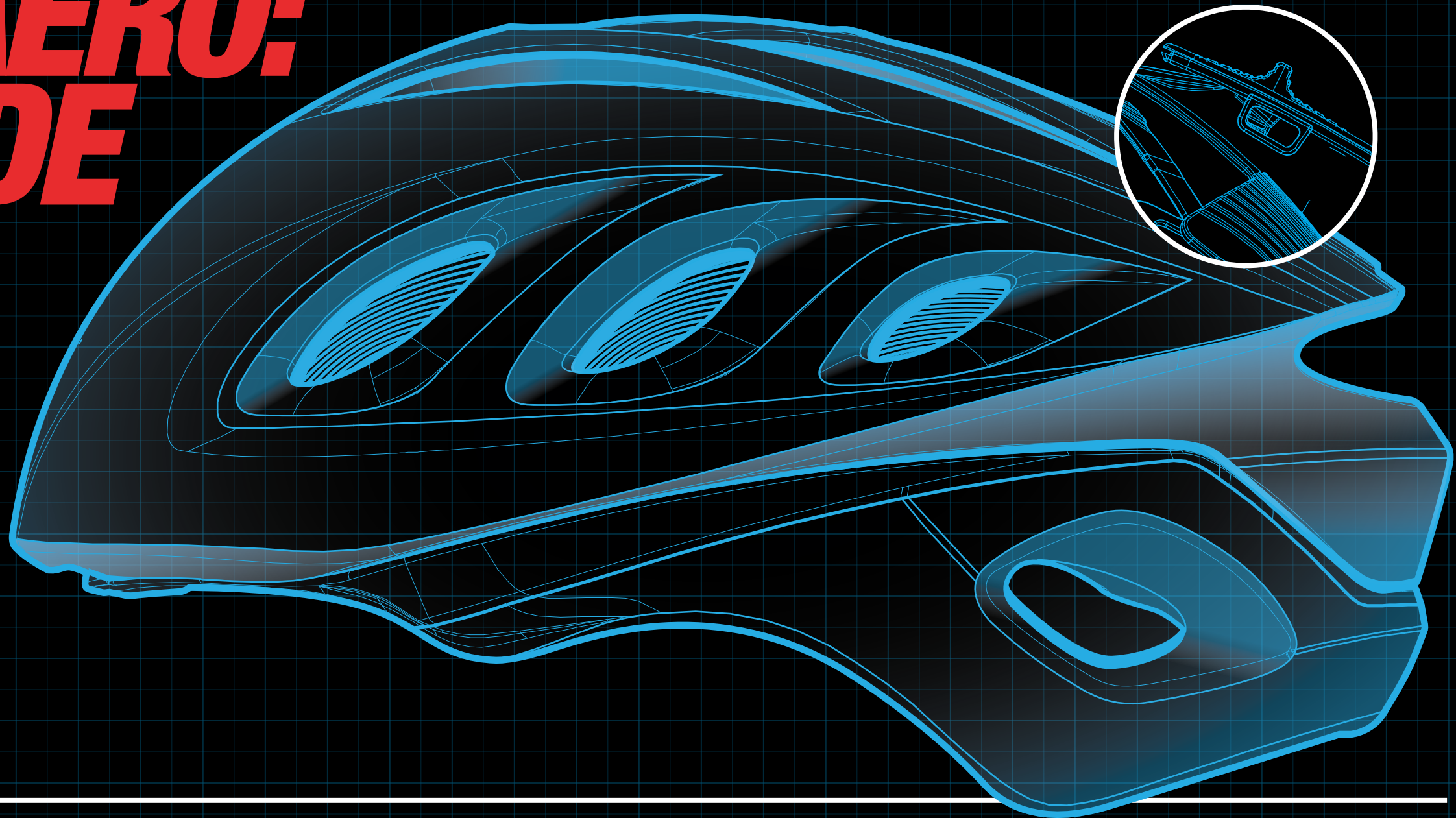
IT BEGAN WITH A QUESTION.

We asked pro road racers from the BELKIN Professional Cycling Team to forget about limitations and tell us what they wanted most in a helmet. The answer to that question led to this: An aerodynamically advanced road helmet with patented technology to help you stay cool while going fast. Very fast.

The new Star Pro is specifically engineered for adaptable performance. It's a completely new approach that combines race-winning aerodynamics with advanced ventilation technologies. In one helmet. Like you've never seen before.

Inspiration came from our long storied history in motorcycle racing and developing aerodynamic profiles for helmets that benefit racers traveling in excess of 200mph. The iconic silhouette and proven heritage of speed offered design cues and proof of what can be achieved. To meet the aggressive aerodynamic goals that were laid out by our engineering team, we built a custom wind-tunnel at "The Dome," Bell's Helmet Technology Center in Scotts Valley, California. We also worked with the sports engineers of Belkin to realize the helmet's potential and ultimately had the validation come from independent third-party wind tunnel testing. In the end, Star Pro's test data spoke for itself.

ACTIVE AERO: THE INSIDE SCOOP



THE CORE TECHNOLOGIES



ACTIVE AERO

Gives you the ability to regulate airflow, temperature and aero efficiency on the fly with a simple slider mechanism



OVERBROW VENTILATION

Regulates temperature by drawing cool air into the intake ports and circulating it through a matrix of air channels pushing out warm air through the exhaust ports



PROGRESSIVE LAYERING

Two-layer liner has less dense EPS foam on interior sections and stiff EPS foam on exterior zones



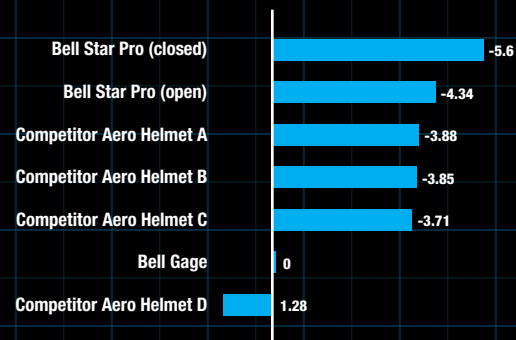
MAGNETIC ZEISS SHIELD

Integrated eyewear for optimal protection and visibility; removes and stores easily on helmet when not in use

HOW IT ALL WORKS

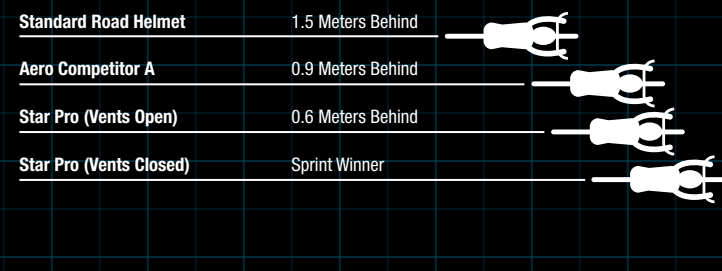
POWER COMPARISON (Gage as baseline)*

30° head angle @ 25 mph using WAD (Wind Averaged Drag)



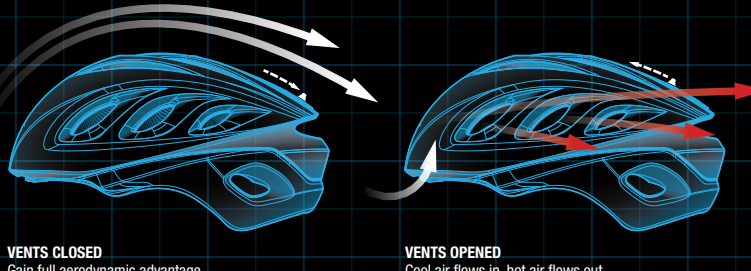
SECONDS MAKE FIRST

In a sprint, every second counts and makes the difference in reaching the podium or just the finish line. This infographic shows the gain earned over the distance of a 300-meter sprint finish at 1150 watts.



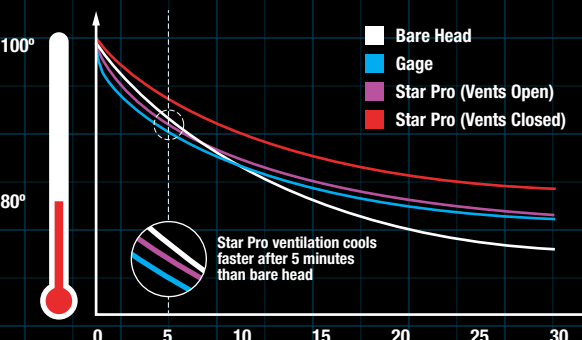
ADAPT FOR THE CONDITIONS

While aero performance is critical, pro racer feedback told us that it's just part of the overall formula for speed. Ventilation, temperature regulation and comfort are also vital factors. So we developed a game-changing solution: Active Aero Technology. For flats and sprints, switch to aero mode on the fly. On climbs, you simply open the vents.



KEEP YOUR COOL

This chart illustrates the cooling efficiency of Star Pro with vents open to be near-equal to a traditional road helmet, with both helmets cooling faster than a bare head during the initial 5-minute (300 seconds) period.



* For more information on our testing and results, please visit www.bellhelmets.com/star-pro

STAR PRO NEW 2015

Uncompromising Speed

A full commitment to speed and efficiency means never having to compromise. That's the idea behind the Star Pro, a game-changing aero road helmet that gives riders the power to optimize performance on the fly in ever-changing race situations. Switch from full ventilation on climbs to wind-slicing aerodynamics in the sprints and flats. With its groundbreaking Active Aero technology, which can be engaged with the simple slide of a button, the Star Pro is engineered to be super fast AND super comfortable.



RETINA SEAR MARKER



INFRARED MARKER



BLACK/RED MARKER



SILVER/TITANIUM MARKER



WHITE MARKER
Available with or without tinted eye shield



MATTE BLACK
Available with or without tinted eye shield



CLEAR EYE SHIELD



TINTED EYE SHIELD
(standard issue)

CERTIFICATIONS	TECHNOLOGIES
CPSC Bicycle	Active Aero™
CE EN1078	Overbrow Ventilation™
	Progressive Layering™
	Magnetic Zeiss Eye Shield
	Lightweight Kit
	X-Static® Padding
	In-Mold Polycarbonate Shell
	Cinch Guide
	FloatFit™
SPECS	SIZES
Weight: 9.4 oz / 266 grams	S 52–56 cm / 20.5"–22"
Vents: 15 (13 Active Aero™)	M 55–59 cm / 21.625"–23.25"
	L 58–62 cm / 22.875"–24.375"



GAGE

Pro Performance

There is no better testing ground than the pro peloton. Day in and day out, professional riders push their equipment way beyond the norm. They demand all-out performance in every kind of condition. The Gage was engineered to meet their exacting standards with breakthrough technologies like our two-way adjustable Twin Axis Gear (TAG) fit system, moisture-wicking X-Static padding, and superlight yet precise buckles and Cam-Locks. Ride like a pro. Get the Bell Gage.



INFRARED SPLIT → NEW 2015



WHITE OMBRE → NEW 2015



MATTE BLACK OMBRE → NEW 2015



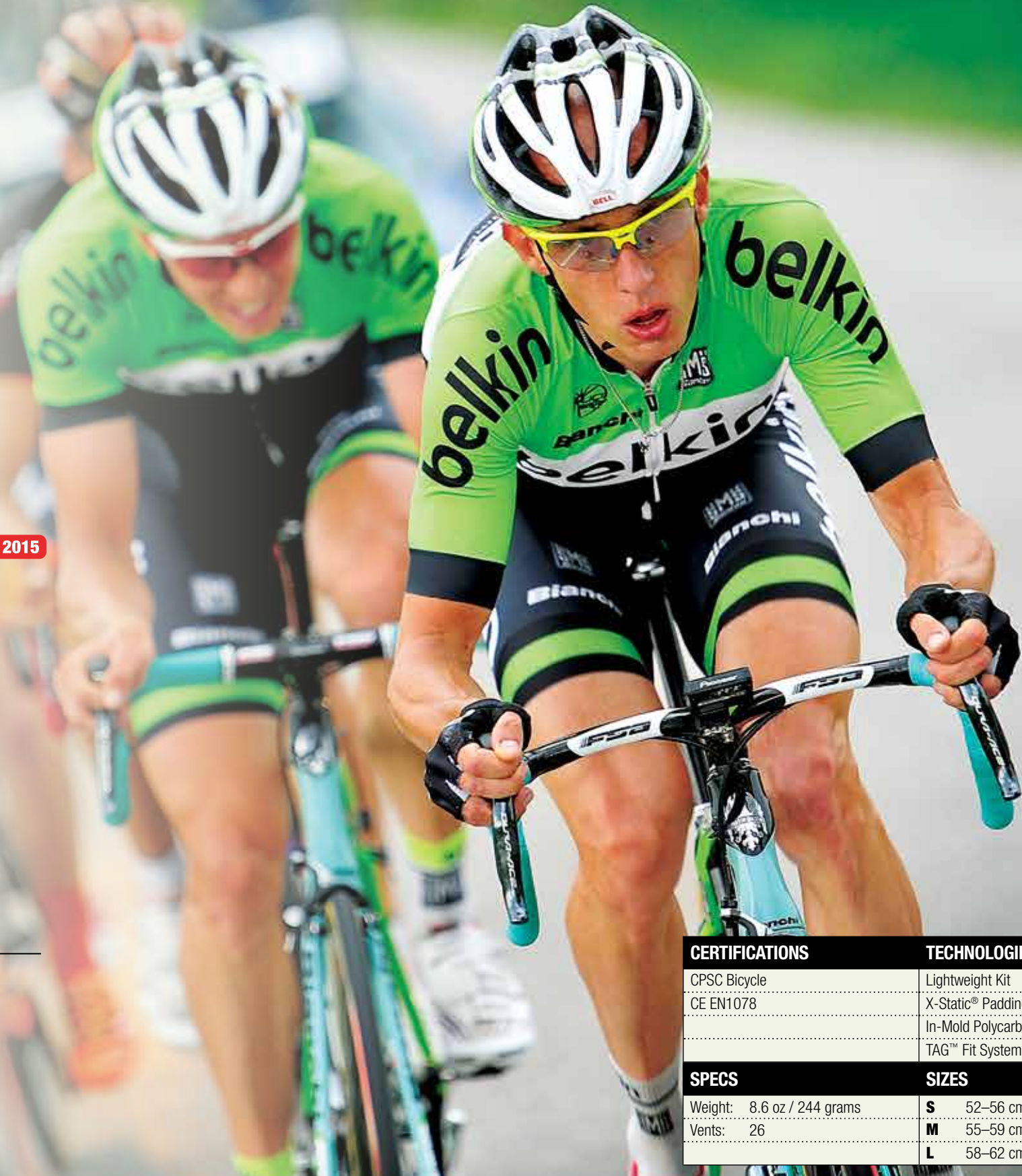
WHITE/BLUE DRAFT → NEW 2015



BLACK/HI-VIS YELLOW DRAFT



WHITE/BLACK/RED SPLIT



CERTIFICATIONS		TECHNOLOGIES	
CPSC Bicycle		Lightweight Kit	
CE EN1078		X-Static® Padding	
		In-Mold Polycarbonate Shell	
		TAG™ Fit System	
SPECS		SIZES	
Weight:	8.6 oz / 244 grams	S	52-56 cm / 20.5"-22"
Vents:	26	M	55-59 cm / 21.625"-23.25"
		L	58-62 cm / 22.875"-24.375"



VOLT RL NEW 2015

Break Away

It's not just the number of air vents (22) that gives the Volt RL its cool, comfortable feel on the road. It's the design of those vents. They pull in cool air as you ride, directing it through the internal StreamJet ventilation channels and over your head. The rear exhaust ports pull out the warm air, creating a consistent cooling effect. Overall comfort is further enhanced the Twin Axis Gear (TAG) fit system and Cam-Lock levers, which make for quick and precise strap adjustment.



WHITE/BLACK/RED HERO



BLACK/INFRARED HERO



MATTE BLACK HERO



WHITE FLASH



MATTE TITANIUM/BLUE SLASH

CERTIFICATIONS		TECHNOLOGIES	
CPSC Bicycle	9.8 oz / 277 grams	Lightweight Kit	
CE EN1078	22	X-Static® Padding	
		In-Mold Polycarbonate Shell	
		TAG™ Fit System	
SPECS		SIZES	
Weight:	9.8 oz / 277 grams	S	52-56 cm / 20.5"-22"
Vents:	22	M	55-59 cm / 21.625"-23.25"
		L	58-62 cm / 22.875"-24.375"



JAVELIN

Beat the Clock

When it's just you against the clock, aerodynamic performance comes first. So whether it's a road time trial or triathlon, give yourself an advantage with the wind-tunnel engineered Javelin. It's designed to not only shave seconds against the wind, but also be comfortable in real-world conditions. The Javelin is well ventilated to keep you cool, and the Twin Axis Gear (TAG) fit system gives it a comfortable fit that's easy to dial in. Our exclusive SeamFlex ear flaps make it quick and easy to remove or put on—a big plus when you're rushing through your T1 transition.



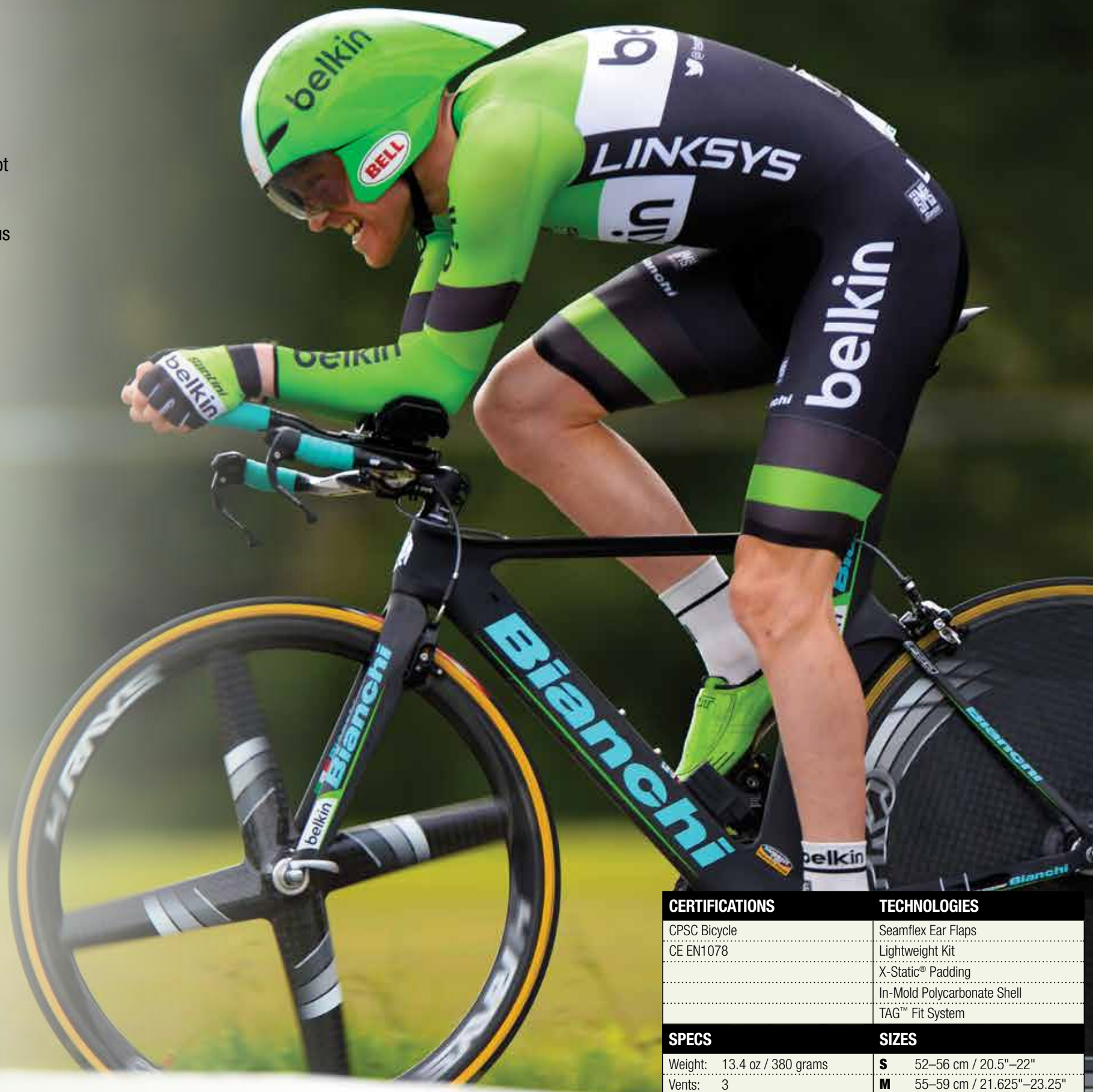
BLACK/SILVER BURNOUT



BLACK/RED STAR



WHITE/SILVER STAR



CERTIFICATIONS		TECHNOLOGIES	
CPSC Bicycle		Seamflex Ear Flaps	
CE EN1078		Lightweight Kit	
		X-Static® Padding	
		In-Mold Polycarbonate Shell	
		TAG™ Fit System	
SPECS		SIZES	
Weight:	13.4 oz / 380 grams	S	52–56 cm / 20.5"–22"
Vents:	3	M	55–59 cm / 21.625"–23.25"
		L	58–62 cm / 22.875"–24.375"

ROAD SPORT HELMETS



OVERDRIVE → NEW 2015

Off the Front

With clean lines and a modern, compact shape, the all-new Overdrive was designed with key trickle-down technologies from Bell's pro-level helmets. The Overbrow Ventilation system channels cool air over the head to regulate temperature. And the new Lightweight Kit uses a special webbing material that's lighter and less susceptible to absorbing sweat. Up your road riding game, shift into Overdrive.



AVAILABLE IN
XL

RED/BLACK HERO



AVAILABLE IN
XL

MATTE BLACK



AVAILABLE IN
XL

WHITE OMBRE



MATTE TITANIUM OMBRE



BLACK/RETINA SEAR HERO



MATTE MINT/SILVER HERO



CERTIFICATIONS		TECHNOLOGIES	
CPSC Bicycle		Overbrow Ventilation™	
CE EN1078		Lightweight Kit	
		In-Mold Polycarbonate Shell	
		TAG™ Fit System	
SPECS		SIZES	
Weight:	8.9 oz / 251 grams	S	52–56 cm / 20.5"–22"
Vents:	19	M	55–59 cm / 21.625"–23.25"
		L	58–62 cm / 22.875"–24.375"
		XL*	61–65 cm / 24"–25.625"
			<i>*select colors</i>

ARRAY

Sleek and Stylish

With its low-profile styling, massive ventilation and incredible comfort, the Array stacks up to many helmets costing twice as much. It's a great choice for road riders seeking a versatile, no-nonsense performer that looks as good as it feels. And Array doesn't skimp on features, either. It includes Bell's Channeled Ventilation, Twin Axis Gear (TAG) fit system and Cam-lock levers. It all adds up to a great-looking helmet that's comfortable enough to let you focus on the road up ahead.



INFRARED/WHITE VELOCITY → **NEW 2015**



WHITE/SILVER VELOCITY



BLACK/TITANIUM VELOCITY



SILVER/RED/BLACK VELOCITY



CERTIFICATIONS		TECHNOLOGIES	
CPSC Bicycle		In-Mold Polycarbonate Shell	
CE EN1078		TAG™ Fit System	
SPECS		SIZES	
Weight:	10 oz / 286 grams	S	52-56 cm / 20.5"-22"
Vents:	24	M	55-59 cm / 21.625"-23.25"
		L	58-62 cm / 22.875"-24.375"

EVENT

NEW 2015

Rule the Road

With its inviting style and comfort-driven technologies, Event is pure motivation to ride more miles. The TAG fit system makes finding the perfect fit easier than ever. And Overbrow Ventilation helps channel in cool air and draw out heat. So you stay cool, comfortable and focused on the ride.



MATTE INFRARED/BLACK ROAD BLOCK



WHITE/SILVER ROAD BLOCK



RED/BLACK ROAD BLOCK



BLUE/CHARCOAL ROAD BLOCK



MATTE BLACK/WHITE ROAD BLOCK



PURPLE/TITANIUM ROAD BLOCK



MATTE BLACK



CERTIFICATIONS		TECHNOLOGIES	
CPSC Bicycle		Overbrow Ventilation™	
CE EN1078		In-Mold Polycarbonate Shell	
		TAG™ Fit System	
SPECS		SIZES	
Weight:	9.5 oz / 268 grams	S	52–56 cm / 20.5"–22"
Vents:	22	M	55–59 cm / 21.625"–23.25"
		L	58–62 cm / 22.875"–24.375"

SOLAR

Energize Your Ride

With a breezy, comfortable feel and sporty look, Solar is a perfect choice for casual riders. Its 23 ventilation ports and easy-to-use features, including our own ErgoDial fit system, give you a great fit without the fuss. And the quality in-mold construction makes Solar a bright choice for cyclists.



BLACK/RED GUILT TRIP → NEW 2015



INFRARED/TI GUILT TRIP → NEW 2015



MATTE BLACK/TI GUILT TRIP → NEW 2015



BLUE/WHITE GUILT TRIP → NEW 2015



WHITE/SILVER SCOREBOARD → NEW 2015



MATTE MINT SCORE BOARD → NEW 2015



TITANIUM



CERTIFICATIONS	TECHNOLOGIES
CPSC Bicycle	In-Mold Polycarbonate Shell
CE EN1078	ErgoDial™ Fit System
SPECS	SIZES
Weight: 10.4 oz / 294 grams	UNIVERSAL ADULT
Vents: 23	54-61 cm / 21.25"-24"

DIRT



A mountain biker is shown in action, riding a red and black full-suspension mountain bike on a narrow, moss-covered trail in a dense forest. The rider is wearing a red helmet with a white logo, black goggles, a black long-sleeved jersey, black shorts, and green gloves. The trail is heavily covered in green moss and ferns, and the background is a lush, green forest with many trees and hanging moss. The overall scene is dynamic and adventurous.

1 ALL-MOUNTAIN HELMETS

ESSENTIAL ALL-MOUNTAIN GEAR

The technologies and capabilities of today's all-mountain bikes are light years ahead of where they were a few short years ago. Lighter weight, smoother suspension and new innovations such as dropper seatposts are enabling riders to tackle burly terrain at faster speeds.

It's time for all-mountain riders to have a helmet that keeps up.

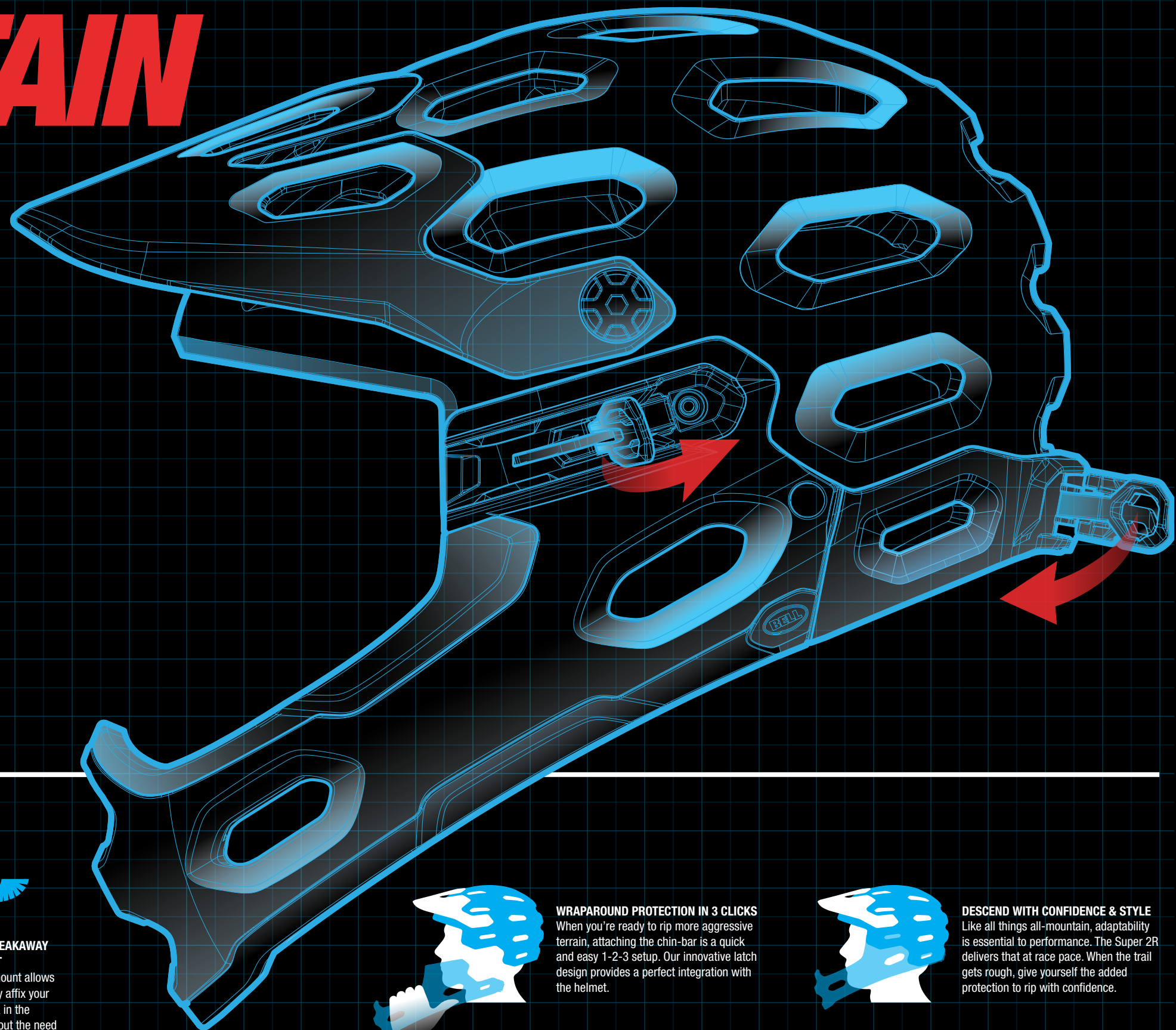
The Super 2R was designed for this new era of progressive trail riding. It's for riders who expect the lightweight performance of XC equipment combined with the confidence and stability of DH gear. Just like the best all-mountain bikes, the Super 2R offers both.

With the Super 2R, it's all about adaptable performance for variable terrain. On the climbs, it's lightweight, cool and super ventilated. On the descents, it's stable, comfortable and bolstered with added protection.

The key to the Super 2R's versatility is a technology called Wraparound Protection. This protective chin-bar can be removed and carried on climbs then quickly and easily snapped into place when it's time to descend.

Everything about the new Super 2R was designed for all-mountain riding. Its Overbrow Ventilation system channels cool air through the helmet to reduce the chance of overheating on long rides. The TAG fit system is designed to give a more comfortable perch on the occipital lobe. The GoggleGuide System lets you easily adjust and stow goggles under the visor. And a newly designed camera mount features an improved breakaway design.

This is essential all-mountain gear. With Super 2R, you're ready for anything.



THE CORE TECHNOLOGIES



WRAPAROUND PROTECTION

The innovative lock-on protective chin-bar is the ultimate solution for progressive trail riding adaptability.



OVERBROW VENTILATION

Actively ushers cool air over the head and regulates temperature by drawing cool air into the intake ports and circulating it through a matrix of air channels.



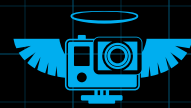
TAG FIT SYSTEM

Adjusts to the head on two axes—circumferentially as standard fit systems do, but also vertically to better accommodate differences in the up/down position of the occipital lobe.



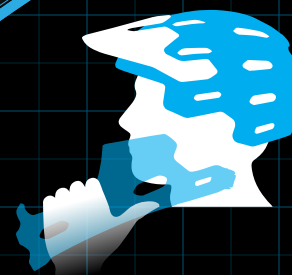
GOGGLEGUIDE

Allows riders to manage their eyewear with minimal intrusion on their ride. The flexible system accommodates both goggles and glasses, and works with or without the visor.



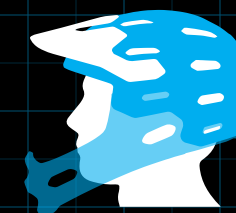
INTEGRATED BREAKAWAY CAMERA MOUNT

The removable mount allows you to seamlessly affix your wearable camera in the perfect spot without the need for messy double-stick tape or zip-ties.



WRAPAROUND PROTECTION IN 3 CLICKS

When you're ready to rip more aggressive terrain, attaching the chin-bar is a quick and easy 1-2-3 setup. Our innovative latch design provides a perfect integration with the helmet.



DESCEND WITH CONFIDENCE & STYLE

Like all things all-mountain, adaptability is essential to performance. The Super 2R delivers that at race pace. When the trail gets rough, give yourself the added protection to rip with confidence.

SUPER 2R NEW 2015

Trail Riding. Transformed

True all-mountain performance is all about adaptability. It's about being prepared to tackle any off-road challenge with confidence, comfort and style. With its game-changing removable chin-bar, the all-new Super 2R is two helmets in one. Remove and stow the chin-bar in your pack or on your rack on long climbs, then lock it in place when you're ready to rip more aggressive terrain. It's a quick and easy 1-2-3 set-up. Add in Overbrow Ventilation, TAG fit system and a new breakaway camera mount, and you have everything you need to conquer all-mountain terrain.

CERTIFICATIONS	TECHNOLOGIES
CPSC Bicycle	Wraparound Chin-bar
CE EN1078	GoggleGuide™ Adjustable Visor System
	Overbrow Ventilation™
	Integrated Breakaway Camera Mount
	X-Static® Padding
	Breakaway Screws
	In-Mold Polycarbonate Shell
	TAG™ Fit System
SPECS	SIZES
Weight: 24.5 oz / 694 grams	S 52–56 cm / 20.5"–22"
Vents: 23 helmet vents	M 55–59 cm / 21.625"–23.25"
4 brow ports	L 58–62 cm / 22.875"–24.375"
6 chin-bar vents	

MIPS
EQUIPPED Available in select colors



INFRARED

Available with or without **MIPS**



MATTE BLACK/WHITE VIPER

Available with or without **MIPS**



WHITE

Available with or without **MIPS**



MATTE BLACK



MATTE TITANIUM/RED VIPER

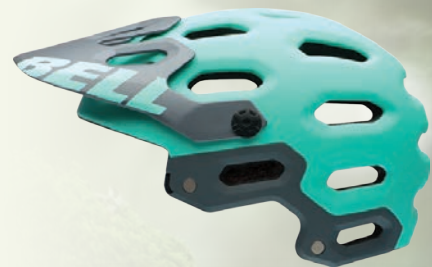


SUPER 2

NEW 2015

All-Mountain Evolution

Enduro racing, all-mountain shredding, heart-pounding trail rides in backcountry terrain. This is the stuff Super 2 was made for. It gives you full, extended protection with lower rear coverage than most of our competition—plus uncompromising comfort and ventilation to help you charge up the climbs. It's loaded with technologies including cooling Overbrow Ventilation, a new breakaway camera mount, and an upgraded TAG fit system that makes dialing in fit easier than ever. And best yet, it is compatible with the Super 2R chin-bar.



MATTE MINT



MATTE GREY



MATTE BLACK



MATTE TITANIUM/RED VIPER



INFRARED

Available with or without 




MATTE BLACK/WHITE VIPER

Available with or without 



WHITE

Available with or without 

CERTIFICATIONS	TECHNOLOGIES
CPSC Bicycle	GoggleGuide™ Adjustable Visor System
CE EN1078	Overbrow Ventilation™
	Integrated Breakaway Camera Mount
	X-Static® Padding
	Breakaway Screws
	In-Mold Polycarbonate Shell
	TAG™ Fit System
SPECS	SIZES
Weight: 12.7 oz / 360 grams	S 52–56 cm / 20.5"–22"
Vents: 23 vents, 4 brow ports	M 55–59 cm / 21.625"–23.25"
	L 58–62 cm / 22.875"–24.375"



Available in select colors



Bell has long been a supporter of IMBA's goal of creating compatible mountain bike opportunities worldwide. For the last two years, our Bell Built program has donated \$200K to fund trail building across the nation.



>> www.imba.org

>> www.bellhelmets.com/bellbuilt

*camera not included



STOKER

Feel the Flow

UPGRADED FROM 2014

If you're ready to step up your trail-riding, the Stoker is made for you. This go-to all-mountain helmet has just the right combo of substance and style. With Overbrow Ventilation and extended rear coverage, the Stoker keeps you cool and confident while riding challenging terrain. And its killer features—like the all-new adjustable visor and SpeedDial Fit System—make it a great choice for any off-road adventure.

CERTIFICATIONS		TECHNOLOGIES	
CPSC Bicycle		Overbrow Ventilation™	
CE EN1078		VPV™ Adjustable Visor	
		In-Mold Polycarbonate Shell	
		Speed Dial™ Fit System	
SPECS		SIZES	
Weight:	11.1 oz / 316 grams	S	52–56 cm / 20.5"–22"
Vents:	13 vents, 4 brow ports	M	55–59 cm / 21.625"–23.25"
		L	58–62 cm / 22.875"–24.375"
		XL*	61–65 cm / 24"–25.625"
			*select colors



Available in select colors



AVAILABLE IN XL

MATTE RED EMBLEM → NEW 2015
Available with or without MIPS



AVAILABLE IN XL

MATTE BLACK
Available with or without MIPS



MATTE WHITE/SILVER BRAILLE → NEW 2015
Available with or without MIPS



AVAILABLE IN XL

MATTE TITANIUM BRAILLE → NEW 2015



MATTE RETINA SEAR → NEW 2015



MATTE DIA DE UNICORN → NEW 2015



In celebration of our continued partnership with the Trek Dirt Series, we worked with artist Taylor Reeve to create a special edition "Dia De Unicorn" graphic that's bold and fun. This custom Stoker is the official choice of Dirt Series coaches, and is available to you for a limited time.





XC/RACE HELMETS

VOLT XC

NEW 2015

Hard Charging

XC racing is all about intensity. Gun it for the holeshots, charge up the climb, pass on the descent. These are the heated battles that Volt XC was designed for. It delivers massive ventilation and a super-comfortable fit that makes you forget it's even there when you're out there red-lining it. Cool air passes through the StreamJet channels and out the rear exhaust ports to regulate temperature and sweat. The Twin Axis Gear (TAG) fit system lets you dial in comfort quickly and easily, and the Variable Position Visor (VPV) offers precise positioning to fight sun glare or shield rain and mud.

CERTIFICATIONS	TECHNOLOGIES
CPSC Bicycle	Lightweight Kit
CE EN1078	X-Static® Padding
	VPV™ Adjustable Visor
	In-Mold Polycarbonate Shell
	TAG™ Fit System
SPECS	SIZES
Weight: 10.8 oz / 305 grams	S 52–56 cm / 20.5"–22"
Vents: 22	M 55–59 cm / 21.625"–23.25"
	L 58–62 cm / 22.875"–24.375"



MATTE BLUE/GREEN HERO



MATTE TITANIUM/BLUE SLASH



WHITE/BLACK/RED HERO



MATTE BLACK HERO



SEQUENCE

Pure XC Performance

The sleek shape gets plenty of attention but the real story with Sequence is its incredible versatility. With a classic cross-country profile, massive ventilation and superb fit system, you can wear it day in and day out on your trail ride. With its two-way-adjustable TAG Fit System, 24 flow-tuned vents and VPV adjustable visor, Sequence is also perfectly suitable for an all-day epic on the weekend.

CERTIFICATIONS		TECHNOLOGIES	
CPSC Bicycle		VPV™ Adjustable Visor	
CE EN1078		In-Mold Polycarbonate Shell	
		TAG™ Fit System	
SPECS		SIZES	
Weight:	11.5 oz / 325 grams	S	52–56 cm / 20.5"–22"
Vents:	21	M	55–59 cm / 21.625"–23.25"
		L	58–62 cm / 22.875"–24.375"



MATTE TITANIUM HERO → **NEW 2015**



MATTE INFRARED HERO → **NEW 2015**



MATTE BLACK HERO → **NEW 2015**



MATTE WHITE/SILVER BURNOUT



BLUE/WHITE BURNOUT



EVENT XC NEW 2015

Climb the Ranks

Whether you're toeing the start line at a local XC race, or hitting the trail for the first time, the last thing you want to worry about is your helmet. With its user-friendly fit features, comfortable cooling technologies, and off-road style, Event XC has you covered. The TAG fit system makes it easy to dial in the perfect fit. Overbrow Ventilation helps channel in cool air and draw out heat—perfect on those long grinder climbs. And the Variable Position Visor shields you from sun glare, so your vision stays sharp when you're ripping through the mountains.



BLACK/HI-VIS YELLOW SPEED FADE



MATTE SILVER/MINT SPEED FADE



MATTE BLACK SPEED FADE



MATTE TITANIUM SPEED FADE



WHITE/RED/BLACK SPEED FADE



CERTIFICATIONS		TECHNOLOGIES	
CPSC Bicycle		Overbrow Ventilation™	
CE EN1078		Blade™ Removable Visor	
		In-Mold Polycarbonate Shell	
		TAG™ Fit System	
SPECS		SIZES	
Weight:	10.2 oz, 290 grams	S	52–56 cm / 20.5"–22"
Vents:	22	M	55–59 cm / 21.625"–23.25"
		L	58–62 cm / 22.875"–24.375"

A photograph of two mountain bikers performing a wheelie on a dirt trail. The rider in the foreground is wearing a red and black jersey with 'SAPIM' and 'H3' logos, a white helmet with a red visor, and yellow gloves. The rider in the background is wearing a black and red jersey with 'DUNN CHINSON' and 'SAPIM' logos, a white helmet with a blue visor, and black gloves. The background shows a dirt trail with trees and a clear blue sky.

18 FULL-FACE HELMETS

FULL-9

Born in Moto

You won't find another helmet manufacturer with deeper roots in motocross. Much of what Bell engineers learned from creating its award-winning Moto-9 helmet went into the Full-9. Take that unrivaled experience, combine it with feedback from downhill and BMX champions, and you have the winning formula. The Full-9 meets the most stringent ASTM Downhill Mountain Bike Racing certification as well as standard CPSC and CE bicycle safety benchmarks. Additional safety-oriented motocross trickle-down technologies include the Eject Helmet Removal System and magnetic cheekpads. Beyond that, the Full-9 includes features like Soundtrax, built-in speaker pockets and audio cable routing—plus slick mounts for Go-Pro or Contour cameras. Add in a lightweight carbon shell, a wide field of view, Overbrow Ventilation intakes and Velocity Flow Ventilation and you have the world's most advanced helmet for DH or BMX.



INFRARED INTAKE → NEW 2015



MATTE BLACK/GREY INTAKE → NEW 2015



TAGGER SCRUB



WHITE/BLACK CARBON EMBLEM



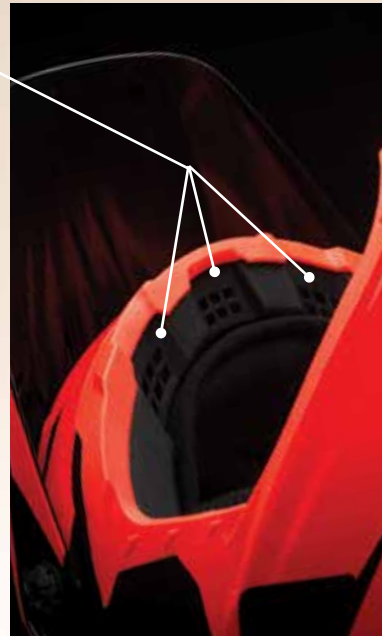
CERTIFICATIONS		TECHNOLOGIES	
CPSC Bicycle		Overbrow Ventilation™	
CE EN1078		Integrated Breakaway Camera Mount	
ASTM F1952-00 (Downhill)		XT-2® Extended Wear Interior	
ASTM F2032-06 (BMX)		Magnetic Removable Cheekpads	
[MULTISPORT CERTIFIED]		Soundtrax™ Speaker System	
		Integrated Eject® Compatibility	
		Breakaway Screws	
		Flying Bridge Visor	
		Lightweight Full Carbon Shell	
SPECS		SIZES	
Weight:	37 oz / 1050 grams	XS	51–53 cm / 20.125"–20.875"
Vents:	10 vents, 3 brow ports	S	53–55 cm / 20.875"–21.625"
		M	55–57 cm / 21.625"–22.5"
		L	57–59 cm / 22.5"–23.25"
		XL	59–61 cm / 23.25"–24"
		XXL	61–63 cm / 24"–24.75"

OVERBROW VENTILATION

The **OVERBROW VENTILATION™** intakes work with the moto-proven Velocity Flow Ventilation™ system on the Full-9 to actively usher cool air over the head via three ports on the brow of the helmet. A specially designed bridge keeps the ducting free from obstruction while the Full-9's air-channel matrix works to maximize full-head ventilation.

INTEGRATED CAMERA MOUNT

The Full-9's **INTEGRATED CAMERA MOUNT** seamlessly affixes your wearable camera in the perfect spot without the need for messy double-stick tape or zip-ties. The removable breakaway mount clicks into the Full-9's top vent, leaving no trace when not in use and putting the camera in the ideal position to capture your ride. The mount's co-molded rubber pad reduces vibration and noise when riding rough terrain.



EJECT SYSTEM

Integrated accommodation of the **EJECT® HELMET REMOVAL SYSTEM** helps first responders to gently remove the helmet from a rider's head, reducing the potential for secondary injuries.

SOUNDTRAX

SOUNDTRAX™ is Bell's system of built-in speaker pockets and integrated audio cable routing. No goofy modifications needed—Soundtrax integrates with the Full-9 to provide the backbeat to your ride.

MAGNETIC CHEEKPADS

The **MAGNEFUSION™ REMOVABLE MAGNETIC CHEEKPADS** swap in and out effortlessly for ease-of-removal both after a crash, as well as for quick-drying between runs.



FULL-9

PHOTO: ADRIAN MARCOUX

TRANSFER-9

All Day Everyday

You've seen high-zoot DH and BMX helmets with trickle-down motocross technology before. But you've never seen one like this. The Transfer-9 is a game-changer. It has years of Bell's unrivaled moto experience deep in its DNA, and it's designed for everyday shredding. That means you get many of the same features as the Full-9 at a price that's built for everyday shredding.



MATTE WHITE/RED SETUP → NEW 2015



GRAPHITE 54 → NEW 2015



GREEN 54 → NEW 2015



MATTE SILVER/MINT GAMMA → NEW 2015



MATTE BLACK/RED GAMMA → NEW 2015



WAR CHIEF → NEW 2015



CERTIFICATIONS	TECHNOLOGIES
CPSC Bicycle	Overbrow Ventilation™
CE EN1078	Breakaway Camera Mount
ASTM F1952-00 (Downhill)	XT-2® Extended Wear Interior
ASTM F2032-06 (BMX)	Quicksnap Removable Cheekpads
[MULTISPORT] CERTIFIED	Soundtrax™ Speaker System
	Integrated Eject® Compatibility
	Breakaway Screws
	Flying Bridge Visor
	Fiberglass Shell
SPECS	SIZES
Weight: 42.3 oz / 1200 grams	XS 51-53 cm / 20.125"-20.875"
Vents: 9 vents, 3 brow ports	S 53-55 cm / 20.875"-21.625"
	M 55-57 cm / 21.625"-22.5"
	L 57-59 cm / 22.5"-23.25"
	XL 59-61 cm / 23.25"-24"
	XXL 61-63 cm / 24"-24.75"

SANCTION

Smaller Size, Big Performance

At just 950 grams, the Sanction is our low-profile full-face helmet aimed at young rippers or BMX riders who don't need the more robust Full-9 or Transfer-9. It was originally designed as a youth model, but the Sanction has also become the choice of adults who want full-face protection but prefer a smaller size and profile. If you're riding a chairlift, go with a Full-9 or Transfer-9. But if you're pedaling BMX or dirt jumps, this helmet will serve you well.



RETINA SEAR DECOMPRESSED → NEW 2015



GRAPHITE/RED LINE UP → NEW 2015



BLUE/BLACK/WHITE SPLATTER



MATTE BLACK



CERTIFICATIONS		TECHNOLOGIES	
CPSC Bicycle		Adjustable Visor	
CE EN1078			
SPECS		SIZES	
Weight:	33.5 oz / 950 grams	S	52-54 cm / 20.5"-21.25"
Vents:	15	M	55-57 cm / 21.625"-22.5"
		L	58-60 cm / 22.875"-23.625"



A BMX rider in a grey tank top and black shorts is captured mid-air, performing a high jump over a concrete bridge. The rider is wearing a helmet and is holding the handlebars of a red BMX bike. The background is a clear blue sky with a bright sun on the right side, creating a lens flare effect. The bridge has a concrete railing and a concrete base. The overall scene is dynamic and action-oriented.

ACTION HELMETS

RETRO- REVOLUTION

Look at the all-new Full Flex and Reflex action sports helmets, and your first thought might be “retro.” The style is classic Bell—muscular, original, born from moto roots.

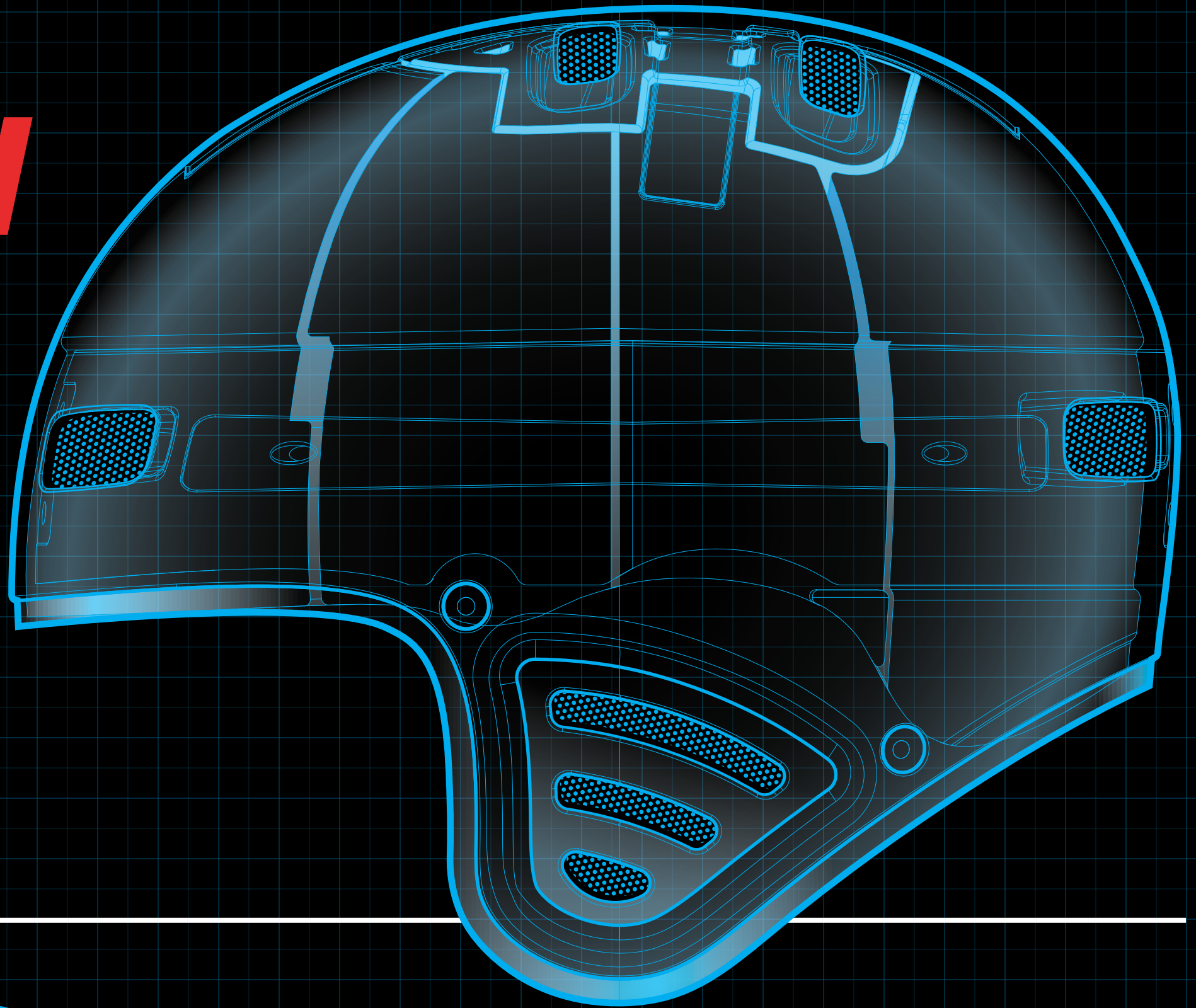
But take a closer look and you’ll see that Full Flex and Reflex are loaded with cutting-edge technologies to help action sports athletes elevate their experiences.

The first thing you need to know is that both Full Flex and Reflex meet or exceed three safety standards for bike and skate. Why? These are multi-sport helmets for multi-purpose shredding. Why does this matter? Because many soft-foam skate helmets have no safety certification whatsoever.

The heart of Full Flex and Reflex is the durable EPP liner, a resilient material. It’s engineered specifically for action sports, where crashes can be part of the game. And the new Double-Walled technology strengthens the shell to further boost the helmet’s ability to meet the multiple impact ASTM skate standard.

Every head shape is unique, and a hard foam liner with a standard circumference can cause pressure points. Bell addresses this with FormFit, which divides the liner into seven segments. They are all connected to an internal skeleton that allows the helmet to flex and conform to your head.

Here’s a closer look at the engineering and technology behind Full Flex, the full-cut version of the helmet, and Reflex, the half-cut version.



THE CORE TECHNOLOGIES



DURABLE & RESILIENT EPP

This new helmet liner material is made to meet or exceed the ASTM F1492-08 multiple impact skate standard. Most bicycling helmets use an EPS liner that’s made to absorb the energy of one significant impact by compressing under force. The new EPP liner compresses in a similar manner when it takes a hit—but the material rebounds after impact.



DOUBLE-WALLED CONSTRUCTION

A thick outer layer of impact-resistant ABS plastic produces a stiff shell. The strength of the shell allows Double-Walled Construction helmets to be certified for multiple activities including bicycle and skate.



BELL FORMFIT

Our interior EPS foam liner is divided into multiple segments, each connected to an internal skeleton which allows the helmet to flex and conform to the shape of your head—a comfortable fit that feels more like a cap than a hardshell helmet.



SOUNDTRAX SPEAKER POCKETS

Soundtrax is Bell’s system of built-in speaker pockets and integrated audio cable routing. No goofy modifications needed—Soundtrax integrates with the helmet to provide the backbeat to your ride.



CUSTOM FIT TO YOUR STYLE

No matter what sport you shred, the Fullflex and Reflex are designed with moto-inspired style in mind to fit into the culture, but stand out from the crowd: on the ramp, in the park, or on the dirt.

FULL FLEX

NEW 2015

Performance. Progression. Style.

Progression. It usually starts in the streets, and that's where the new Full Flex was born. Engineered to inspire action sportst athletes as they push new limits, it features full-cut style and protection with cutting-edge technologies—all packaged in a style that's both modern and classic. The resilient EPP liner was specifically engineered for action sports, where crashes just happen. And the combination of two innovative technologies—FormFit and Double-Walled Construction—improves fit and protection.



MATTE BLACK



WHITE



CERTIFICATIONS		TECHNOLOGIES	
CPSC Bicycle		Resilient EPP material	
CE EN1078		Double-Walled Construction	
ASTM F1492-08 (Skate)		Bell FormFit™	
		SoundTrax™ Speaker System	
		Extended Shell	
SPECS		SIZES	
Weight:	26 oz / 740 grams	S	51–55 cm / 20.125"–21.625"
Vents:	10	M	55–59 cm / 21.625"–23.25"
		L	59–61.5 cm / 23.25"–24.25"

**MULTISPORT
CERTIFIED**

REFLEX

NEW 2015

Street-Inspired Durability

Inspired gear for all-day action. Smart, stylish and crazy comfortable, Reflex is at home in the dirt or on the streets. Its resilient EPP liner is made from a material that's specifically engineered for action sports athletes who are more likely to experience routine crashes. Double-Walled Construction makes the outer shell stiffer and stronger, and the new FormFit technology gives Reflex a more comfortable fit.

CERTIFICATIONS	TECHNOLOGIES
CPSC Bicycle	Resilient EPP material
CE EN1078	Double-Walled Construction
ASTM F1492-08 (Skate)	Bell FormFit™
MULTISPORT CERTIFIED	
SPECS	SIZES
Weight: 19.8 oz / 560 grams	S 51-55 cm / 20.125"-21.625"
Vents: 8	M 55-59 cm / 21.625"-23.25"
	L 59-61.5 cm / 23.25"-24.25"



BLACK PINSTRIPE



MATTE RED



MATTE BLACK



WHITE



MATTE OLIVE GREEN



SEGMENT

Style Meets Tech

The skate-style look never gets old. But that rigid bowl-style shell feel can be a drag. That's where Segment shines. It has the classic shape of an old-school skate helmet, but its ingenious design gives it head-hugging flexibility. So it's way more comfortable. How did we do it? A series of interior EPS foam segments are connected by a reinforcing skeleton—so it fits more like a comfortable cap than a helmet and still meets bike and skate safety standards. Pretty amazing, right?



GOLD FLAKE 500 → NEW 2015



MATTE WHITE PLUME → NEW 2015



MATTE RED COMET → NEW 2015



MATTE METALLIC BROWN → NEW 2015



MATTE JIMBO PUNKER → NEW 2015



CERTIFICATIONS		TECHNOLOGIES	
CPSC Bicycle		Bell FormFit™	
CE EN1078			
ASTM F1492-08 (Skate)			
ASTM F2032 (BMX)			
[MULTISPORT CERTIFIED]			
SPECS		SIZES	
Weight:	14.4 oz / 465 grams	S	51–55 cm / 20.125"–21.625"
Vents:	8	M	55–59 cm / 21.625"–23.25"
		L	59–61.5 cm / 23.25"–24.25"

NEW 2015 → **SEGMENT JR.** page 104





WHITE

NEW 2015



MATTE BLACK



MATTE PURPLE COMET

NEW 2015



MATTE BLUE

SEGMENT





★ ★ ★ ★ ★
**URBAN
HELMETS**

INTERSECT

Prowl the Urban Jungle

A little bit old-school moto, a little bit urban chic. The Intersect blends the classic cafe racer-inspired moto look with understated design and comfort. The EPS foam liner is segmented and connected to a reinforcing skeleton—so it flexes and conforms to your head. Now you're ready to hit the city streets.



INFRARED

→ NEW 2015



MATTE BLACK



MATTE PRIMER GREY



CERTIFICATIONS		TECHNOLOGIES	
CPSC Bicycle		Bell FormFit™	
CE EN1078		Integrated Light Mount	
		Reflective Decals	
		Removable Visor	
SPECS		SIZES	
Weight:	15.9 oz / 450 grams	S	52–56 cm / 20.5"–22"
Vents:	9	M	55–59 cm / 21.62 5"–23.25"
		L	58–62 cm / 22.875"–24.375"



peopleforbikes™

Bell is a member of PeopleForBikes, the leading movement to improve bicycling in the U.S. By collaborating with millions of individual riders, businesses, community leaders, and elected officials, PeopleForBikes is uniting Americans to boost bicycling on a national level for results that can be seen locally. Learn more: >> www.peopleforbikes.org

MUNI

City Slicker

Integrated features, outstanding functionality and purposeful design make Muni the standard for commuting helmets. The overall shape and style has been continually refined since its introduction, and with clever new features, this Muni is that much better. The TAG fit system is unrivaled for comfort, fit and ease-of-use. There's also an integrated mounts front and rear to accommodate the Blackburn Front Flea light system. The Muni also accommodates Bell's Flip Mirror, which clips to special grooves in the visor and stows away neatly when not in use.



WHITE/SILVER VIS

→ NEW 2015



MATTE BLACK VIS



HI-VIS YELLOW



Optional: Bell Flip Mirror
Blackburn Flea 2.0 Front Light
Blackburn Flea 2.0 Rear Flasher

>> www.blackburndesign.com

CERTIFICATIONS		TECHNOLOGIES	
CPSC Bicycle		Integrated Light Mount	
CE EN1078		Rain Gutters	
		Integrated Flip Mirror Mount	
		Reflective Decals	
		Blade Plus™ Removable Visor	
		In-Mold Polycarbonate Shell	
		TAG™ Fit System	
SPECS		SIZES	
Weight:	10.2 oz / 290 grams	S/M	50–57 cm / 19.75"–22.5"
Vents:	21	M/L	54–61 cm / 21.25"–24"

A woman in a black hoodie and a light-colored helmet is riding a black bicycle on the left. A man in a dark blue t-shirt, grey pants, and a dark helmet is riding a blue bicycle on the right. They are on a paved path with palm trees and a clear blue sky in the background. The text 'ACTIVE HELMETS' is overlaid on the left side of the image.

ACTIVE HELMETS

SLANT

Versatile Performance

Versatile, stylish and comfortable, the Slant is an exceptional helmet at an amazing price. Features 21 channeled vents, a Fusion-In Mold Microshell, ErgoDial Fit System, easy-adjust Cam-Lock levers, and a Blade Visor.

CERTIFICATIONS	TECHNOLOGIES
CPSC Bicycle	Removable Visor
CE EN1078	In-Mold Polycarbonate Shell
	ErgoDial™ Fit System
SPECS	SIZES
Weight: 11.8 oz / 335 grams	UNIVERSAL ADULT
Vents: 21	54-61 cm / 21.25"-24"



MATTE TITANIUM BRAILLE → NEW 2015



MATTE WHITE/SILVER BRAILLE → NEW 2015



MATTE RED EMBLEM → NEW 2015



MATTE BLACK → NEW 2015



PISTON STRUT

SOFT BRIM

Simply Smart

NEW 2015

The helmet that fits your unique style and personality, as well as being comfortable, secure and easy to use. With its soft-brim visor, and super easy to use ErgoDial Fit System, you'll be ready for any ride with a look that's as good on city streets as it is on the bike path.



PISTON SOFT BRIM MATTE BLACK



PISTON SOFT BRIM MATTE METALLIC BROWN



STRUT SOFT BRIM MATTE SILVER/MINT



STRUT SOFT BRIM MATTE BLACK/INFRARED



CERTIFICATIONS	TECHNOLOGIES
CPSC Bicycle	Removable Soft Brim Visor
CE EN1078	In-Mold Polycarbonate Shell
	ErgoDial™ Fit System
SPECS	SIZES
Weight:	PISTON: UNIVERSAL ADULT
PISTON: 10 oz / 284 grams	54–61 cm / 21.25"–24"
STRUT: 9.7 oz / 274 grams	STRUT: UNIVERSAL WOMEN'S
Vents: 15	50–57 cm / 19.625"–22.5"



PISTON

Find Your Adventure

With its rounded profile, snap-in visor and casual vibe, the Piston adapts easily to your style of riding. Its high-quality Fusion In-Mold construction ensures Piston's strength and durability. It has 15 extra-large vents for cool comfort, and the ErgoDial fit system—paired with easy-to-adjust Cam-Lock levers—gives Piston a precise fit.

CERTIFICATIONS	TECHNOLOGIES
CPSC Bicycle	Removable Visor
CE EN1078	In-Mold Polycarbonate Shell
	ErgoDial™ Fit System
SPECS	SIZES
Weight: 11.5 oz / 317 grams	UNIVERSAL ADULT
Vents: 15	54–61 cm / 21.25"–24"



MATTE RED COMET

NEW 2015



BLUE COMET

NEW 2015



MATTE BLACK OMBRE

NEW 2015



MATTE RETINA SEAR/TI SURF

NEW 2015



MATTE WHITE/SILVER OMBRE

NEW 2015



TITANIUM COMET

NEW 2015



STRUT

Designed for Her

It's not just a men's helmet with girly graphics. The Strut was designed for female riders with universal women's sizing and ponytail compatibility. It features strong, reliable In-mold construction, Bell's ErgoDial fit system, and easy-to-adjust Cam-lock levers. And with 15 large vents plus a snap-in visor, Strut helps handle the elements—sunshine, rain or heat—so you can enjoy the ride.



MINT COMET

→ NEW 2015



MATTE PURPLE COMET

→ NEW 2015



MATTE TITANIUM/PURPLE SLANT

→ NEW 2015



WHITE/TEAL SLANT



CERTIFICATIONS	TECHNOLOGIES
CPSC Bicycle	Removable Visor
CE EN1078	In-Mold Polycarbonate Shell
	ErgoDial™ Fit System
SPECS	SIZES
Weight: 11 oz / 310 grams	UNIVERSAL WOMEN'S
Vents: 15	50-57 cm / 19.625"-22.5"

XLP

Made to Fit

The Bell XLP proves that sometimes bigger really is better, delivering big time style and features specifically for the extra large of head! The XLP features our ErgoDial fit system, Fusion In-Mold construction, snap-in visor, Cam-Lock levers for easy strap adjustment and 15 massive vents for great airflow.



TITANIUM COMET

NEW 2015



MATTE BLACK



BLACK/RED/SILVER SCURVY



CERTIFICATIONS		TECHNOLOGIES	
CPSC Bicycle		Removable Visor	
CE EN1078		In-Mold Polycarbonate Shell	
		ErgoDial™ Fit System	
SPECS		SIZES	
Weight:	12.9 oz / 367 grams	UNIVERSAL EXTRA LARGE	
Vents:	15	58-65 cm / 22.875"-25.625"	



SOLAR FLARE

Blistering Velocity

Top notch features at a bottom-rung price is what the Bell Solar Flare is all about. Features include Bell's Fusion In-Mold construction, ErgoDial fit system, easy-to-adjust Cam-Lock levers, 23 vents and a snap-in visor.



MATTE BLACK/TITANIUM SCOREBOARD → NEW 2015



MATTE RED COMET → NEW 2015



TITANIUM COMET → NEW 2015



CERTIFICATIONS		TECHNOLOGIES	
CPSC Bicycle		Removable Visor	
CE EN1078		In-Mold Polycarbonate Shell	
		ErgoDial™ Fit System	
SPECS		SIZES	
Weight:	11 oz / 312 grams	UNIVERSAL ADULT	
Vents:	23	54-61 cm / 21.25"-24"	

SOLARA

Feed the Fire

This one is for the ladies. Independent, stylish, and specifically engineered to fit the active woman. Fusion In-Mold construction, ErgoDial fit system, easy-to-adjust Cam-Lock levers, 23 vents and a snap-in visor ensure she doesn't have to compromise performance for comfort.



MATTE PURPLE COMET → NEW 2015



MATTE SILVER/MINT → NEW 2015



WHITE SILVER SCOREBOARD → NEW 2015



CERTIFICATIONS	TECHNOLOGIES
CPSC Bicycle	Removable Visor
CE EN1078	In-Mold Polycarbonate Shell
	ErgoDial™ Fit System
SPECS	SIZES
Weight: 10.5 oz / 298 grams	UNIVERSAL WOMEN'S
Vents: 23	50-57 cm / 19.625"-22.5"

PRESIDIO

City Style

The Presidio is a breath of fresh air at the entry level. Featuring stout in-mold construction, 17 breezy vents, an ErgoDial fit system and Snap-In visor, the Presidio is the perfect full-featured lid for any rider.

CERTIFICATIONS	TECHNOLOGIES
CE EN1078	Removable Visor
	In-Mold Polycarbonate Shell
	ErgoDial™ Fit System
SPECS	SIZES
Weight: 273 grams	UNIVERSAL ADULT
Vents: 17	54-61 cm



MATTE WHITE/SILVER STRAFE → NEW 2015



BLACK/TITANIUM STRAFE → NEW 2015



RED/BLACK STRATUS → NEW 2015



PURPLE PANTHER → NEW 2015



MATTE TITANIUM SUBSTANCE → NEW 2015



YOUTH HELMETS



OCTANE

Youth Movement

The Octane is the perfect choice for high-energy kids on the go. Featuring Fusion In-Mold construction, it has cool graphics, Bell's ErgoDial fit system, and easy-to-adjust Cam-Lock levers for a sure fit. The snap-in visor gives Octane some attitude, and the 15 air vents keeps it cool.



BLUE COMET

NEW 2015



MATTE PURPLE COMET

NEW 2015



RED COMET

NEW 2015



MATTE HI-VIS YELLOW SKRATCHER



BLACK/RED FLAMES



CERTIFICATIONS		TECHNOLOGIES	
CPSC Bicycle		PinchGuard™ Buckle	
CE EN1078		Removable Visor	
		In-Mold Polycarbonate Shell	
		ErgoDial™ Fit System	
SPECS		SIZES	
Weight:	11 oz / 310 grams	UNIVERSAL YOUTH	
Vents:	15	50–57 cm / 19.625"–22.5"	

TRIGGER

In With the Cool Kids

This entry-level kid's lid makes wearing a helmet part of the fun. The Trigger's features make dialing in a perfect fit easy as pie. The ErgoDial fit system and Cam-lock levers keep Trigger secure and comfortable. And with 23 air vents, cooler heads prevail.



CHARCOAL/HI-VIS YELLOW RIPPLER



BLACK/RED RIPPLER



BLUE/PINK RIPPLER



BLACK/HOT PINK DREAM CANYON



CERTIFICATIONS	TECHNOLOGIES
CPSC Bicycle	PinchGuard™ Buckle
CE EN1078	In-Mold Polycarbonate Shell
	ErgoDial™ Fit System
SPECS	SIZES
Weight: 9.6 oz / 273 grams	UNIVERSAL YOUTH
Vents: 23	50-57 cm / 19.625"-22.5"

SHASTA

Young and Free-Wheeling

The Shasta combines in-mold construction, 17 breezy vents, an ErgoDial fit system and a Snap-In visor with Bell's PinchGuard buckle to deliver exceptionally high performance at an entry level.



BLUE/RED VELOCITY

→ NEW 2015



MINT WEAVE

→ NEW 2015



MATTE BLACK/TITANIUM VELOCITY

→ NEW 2015



WHITE/SILVER SCOREBOARD

→ NEW 2015



CERTIFICATIONS	TECHNOLOGIES
CE EN1078	Removable Visor
	In-Mold Polycarbonate Shell
	ErgoDial™ Fit System
SPECS	SIZES
Weight: 275 grams	UNIVERSAL YOUTH
Vents: 17	50-57 cm

SEGMENT JR. NEW 2015

A Skate-Style Classic

Blending the style of a classic skate helmet with head-hugging comfort and advanced fit technologies, the new Segment Jr. gives action sport groms everything they need. The secret to its comfort is Bell FormFit, which makes the helmet fit more like a comfortable cap than a hard-shell helmet. The eight internal segments are connected by a reinforcing skeleton. Segment Jr. meets both skate and BMX safety standards, making it the perfect everyday helmet for active mini-shredders.



PINK/YELLOW COMET



MATTE PURPLE WINGS



MATTE GREY/GREEN



BLUE NITRO



MATTE BLACK/WHITE PAUL FRANK SKURVY



CERTIFICATIONS		TECHNOLOGIES	
CPSC		Bell FormFit™	
CE EN1078			
ASTM F1492-08 (Skate)			
ASTM F2032 (BMX)			
[MULTISPORT CERTIFIED]			
SPECS		SIZES	
Weight:	13.7 oz / 388 grams	XS	48-53 cm / 18.875"-20.875"
Vents:	8	S	51-55 cm / 20.125"-21.625"



RED PAUL FRANK PAINT BALL



WHITE



GREEN SHOCKSTEADY



INFRARED



MATTE BLACK

SEGMENT JR.

BUZZ

Pint-Size Pal

No hassles, just fun. The Buzz has no muss, no fuss features like the ErgoDial fit system, Cam-lock levers for a snug, secure fit, and a snap-in visor to shield sun glare or rain. Its 15 air vents keep lil' rippers cool, and the graphics are sure to get them pumped up for the ride.

CERTIFICATIONS		TECHNOLOGIES	
CPSC Bicycle		PinchGuard™ Buckle	
CE EN1078		Removable Visor	
		In-Mold Polycarbonate Shell	
		ErgoDial™ Fit System	
SPECS		SIZES	
Weight:	11 oz / 310 grams	UNIVERSAL CHILD	
Vents:	15	47-54 cm / 18.5"-21.25"	



CAMO

NEW 2015



BLACK/RED FLAMES

NEW 2015



WHITE/PURPLE FLAMES

NEW 2015



BLUE FLASH

NEW 2015



PURPLE LOVE BIRDS



ZIPPER

NEW 2015

Bold and Bright

With six super-fun color and graphics choices and a cool, compact shape, Zipper's looks alone will get young rippers excited to ride. But the real magic here is the high-quality construction and awesome comfort. The ErgoDial Fit System and PinchGuard Buckle make it easy for parents to cinch it up and send them rolling along.



BLUE PUFFER



PINK PARADISE



ORANGE TIGER



INFRARED FLARE



POP GREEN SPLAT



PURPLE PENGUIN



CERTIFICATIONS	TECHNOLOGIES
CPSC Bicycle	PinchGuard™ Buckle
CE EN1078	In-Mold Polycarbonate Shell
	ErgoDial™ Fit System
SPECS	SIZES
Weight: 8.3 oz / 235 grams	UNIVERSAL CHILD
Vents: 15	47-54 cm / 18.5"-21.25"

BELLINO

A Party for Your Head

Great styling, great graphics and great features. The Bellino has it all—an ErgoDial Fit System, a built-in visor, Tight-Fit Microshell, Cam-Lock Levers and a PinchGuard Buckle.

CERTIFICATIONS	TECHNOLOGIES
CE EN1078	In-Mold Polycarbonate Shell
	ErgoDial™ Fit System
SPECS	SIZES
Weight: 252 grams	S/M 48–52 cm
Vents: 6	M/L 52–56 cm



HUMMINGBIRDS

→ NEW 2015



SAFARI

→ NEW 2015



HELICOPTERS

→ NEW 2015



HEART COLOR BLOCK



GLOSSARY

CONSTRUCTION

BELL FORMFIT

By adding a flexible fit technology to the interior EPS foam liner, we've greatly improved the comfort of hardshell helmets. The liner is divided into multiple segments, each connected to an internal skeleton which allows the helmet to flex and conform to the shape of your head. The result is Bell FormFit™—a comfortable fit that feels more like a cap than a hardshell helmet.

COMPOSITE FIBER INTAKE (CFI) COMPOSITE CONSTRUCTION

Bell's Composite Fiber Intakes™ (CFI) serve double duty on the Volt. First, they serve as an ultra lightweight yet rigid skeleton to reinforce the helmet's overall structure. Second, their directional orientation deflects airflow to the helmet's internal StreamJet Ventilation™ system which uses the Venturi Effect to increase ventilation velocity and cooling.

DOUBLE-WALLED CONSTRUCTION

A thick outer layer of impact-resistant ABS plastic produces a stiffer shell. The added strength of the shell allows Double-Walled Construction™ helmets to be certified for multiple activities including bicycle, skate and snow.

DURABLE & RESILIENT EPP

This new helmet liner material was engineered specifically for action sports athletes who experience routine falls while practicing their sport. It's made to meet or exceed the ASTM F1492 multiple impact skate standard. Most bicycling helmets use an EPS liner that's made to absorb the energy of one significant impact by compressing under force. The new Durable & Resilient EPP™ liner compresses in a similar manner when it takes a hit—but the material rebounds after impact.

FUSION IN-MOLD POLYCARBONATE SHELL

In-molding is the process of bonding the helmet's microshell to its EPS foam layer to provide a sturdier, more solid helmet. The EPS foam is shot into the thin microshell cap when it's in the mold—thus the name—rather than formed separately and taped on later. This process was pioneered by Bell and is now the industry standard for all high-end helmets. All but our toddler helmets are now made with this construction method.

PROGRESSIVE LAYERING

With Progressive Layering™, the EPS foam liner is constructed in two layered parts, each using different material densities. By strategically placing lighter density foam on interior sections, and stronger, denser foam on exterior zones, the liner can help manage the energy of impacts that could occur.

FIT AND RETENTION SYSTEMS

CAM-LOCK LEVERS

Bell's Cam-Lock™ strap levers make it easy to adjust the straps around your ears. Simply open the cam, position comfortably, and close the lever.

CINCH GUIDE

This new fixed-position strap design features an innovative adjuster piece that moves side-to-side, allowing you to fine-tune the positioning once, and then forget about it. Besides convenience, there are several key performance benefits to the Cinch Guide system: It offers more precise fore/aft positioning, it eliminates helmet creep, and it places the straps flat against the face. The result is a more comfortable fit, improved aerodynamics, and less hassle.

ERGODIAL

The ErgoDial™ Fit System brings one-handed adjustments to our Universal Fit helmets. A simple press of the button and slide of the dial bring you a snug and comfy stability.

FLOAT FIT

Bell's most advanced high-performance fit system combines comfort and security in an ultra lightweight design. Float Fit™ optimizes your helmet's fit in two ways—circumference adjustment and vertical positioning. To minimize weight and simplify adjustments, the arms of the fit system feature a new “float” design that automatically cradles the occipital lobe bump on the back of your head. This settles the helmet into an ideal up/down position. Light, simple and super comfortable.

PINCHGUARD BUCKLE

Bell's PinchGuard™ buckle is specially designed to prevent kids from pinching their neck when they secure their helmet.

SPEED DIAL

Bell's Speed Dial™ fit system is specially designed to be compatible with helmets that have lower coverage in the rear. With a simple twist of the dial, the easily-accessible Speed Dial adjusts to a glove-like fit.

TWIN AXIS GEAR (TAG)

Bell's next-generation Twin Axis Gear™ (TAG) fit system adjusts to the head on two axes—circumferentially as standard fit systems do, but also vertically to better accommodate differences in the up/down position of the occipital lobe. For added comfort we've co-molded the system arms with soft rubber and positioned them higher to better accommodate eyewear. The result is the most adjustable, comfortable and easy-to-use fit system ever.

VENTILATION/COOLING

ACTIVE AERO

Active Aero™ gives the rider the ability to regulate airflow, temperature and aero efficiency on the fly with a simple button seamlessly integrated into the top of the helmet. The internal slider mechanism opens and closes helmet vents on demand to ensure performance fit for your ride.

CHANNELED VENTILATION

Specially designed ventilation channels on the interior of the helmet's liner brings cool air in through the front, passes it over the head and flushes warm air out of the rear ports. You'll find some form of Channeled Ventilation™ on almost all Bell helmets, but our higher end helmets feature deeply sculpted channels that keep air moving whether you're bombing it at 30 mph, or huffing it uphill at single digit speed.

OVERBROW VENTILATION

The Overbrow Ventilation™ system actively ushers cool air over the head via intake ports on the brow of the helmet. A specially designed bridge keeps the ducting free from obstruction while the helmet's air-channel matrix works to maximize full-head ventilation.

STREAMJET VENTILATION

For the Volt, Bell engineers created an airflow matrix that mixes the deeply sculpted Channeled Ventilation™ ducts with specially designed constriction channels that use the Venturi Effect to increase airflow rates. The result of the alternating high volume and high airflow channels is StreamJet Ventilation™, a system that efficiently moves cool air in the front and exhausts warm flow out the rear of the helmet.

VELOCITY FLOW VENTILATION

Using advanced flow dynamics modeling, wind tunnel testing and rider trials, Bell engineers created a natural airflow engine that literally pulls air through the internal venting system, keeping the rider cool and dry. Developed for moto, Velocity Flow Ventilation™ technology has made its way to the Full-9 and Transfer-9.

VISORS

BLADE AND BLADE PLUS VISORS

Bell's Blade Visor™ mixes dramatic looks with top-notch functionality. Horizontal I-beam pins keep the visor in place with minimal intrusion on the helmet surface. The Blade Plus Visor™ lights up the ride by adding an integrated perch for mounting the Blackburn Flea front light.

FLYING BRIDGE VISOR

The Flying Bridge Visor™ was developed for Bell's award-winning Moto-8 motorcycle helmet and adapted for the Full-9 and Transfer-9 DH/BMX helmets. The easy-to-adjust system uses two side-mounted adjusting screws in conjunction with a proprietary cam mechanism that hold the visor firmly and securely without the need of a hard-to-reach center screw. Visor adjustments are easy, even in gloved hands.

GOGGLEGUIDE ADJUSTABLE VISOR SYSTEM

The GoggleGuide™ Adjustable Visor System allows riders to manage their eyewear with minimal intrusion on their ride. The flexible system accommodates both goggles and glasses, and works either with the visor installed, or without, using the included goggle retention arms. Simple, effective, cool.

VARIABLE POSITION VISOR (VPV)

Bell's top-of-the-line Variable Position Visor™ allows for 15 degrees of horizontal adjustment by using an embedded clutch mechanism that holds the visor firmly at the desired angle. Changing the VPV's angle just takes a simple up or down tug.

OTHER TECHNOLOGIES

BREAKAWAY SCREWS

Bell's purpose-built breakaway screws are designed to break off on high velocity impacts to avoid having your visor snag—yet another preventative design by Bell.

INTEGRATED BREAKAWAY CAMERA MOUNT

The integrated breakaway camera mount allows you to seamlessly affix your wearable camera in the perfect spot without the need for messy double-stick tape or zip-ties. We've engineered the camera to “breakaway” on impact should you hit the deck potentially saving you and your camera.

INTEGRATED COMPATIBILITY w/ EJECT SYSTEM

Integrated accommodation of the Eject® Helmet Removal System helps first responders to gently remove the helmet from a rider's head, reducing the potential for secondary injuries.

MAGNEFUSION CHEEKPADS

The Magnefusion™ Removable Magnetic Cheekpads swap in and out effortlessly for ease-of-removal both after a crash, as well as for quick-drying between runs.

SOUNDTRAX SPEAKER SYSTEM

Soundtrax™ is Bell's system of built-in speaker pockets and integrated audio cable routing. No goofy modifications needed—Soundtrax integrates perfectly with the helmet to provide the backbeat to your ride.

WRAPAROUND PROTECTION

The Super 2R lock-on protective chin-bar is a great solution for progressive trail riding adaptability. Just remove it for long climbs or sweaty XC efforts—it's easy to collapse and carry it in your hydration pack. And when you're ready to rip on aggressive terrain, snap the chin-bar in place with our simple 3-step connection process. No tools are needed. The snap-in cheek pads come in two different thickness options, giving you customized fit and comfort.

⚠ WARNING: All chin-bars have limits, and serious injury or death can occur. Read owner's manual carefully being using your helmet.

X-STATIC AND XT-2 PADDING

Woven with real silver fibers, X-Static® and XT-2® padding are quick-drying materials that inhibit growth of odor-causing bacteria and fungi while keeping you cooler than standard comfort pads.





Product Photography: **Josh Sawyer** (unless otherwise noted)

© 2014 Bell Sports, Inc. All rights reserved. Bell Helmets may be protected under one or more Patents. For more information, visit www.bellhelmets.com. Array, Bellino, Blackburn, Blade Visor, Blade Plus Visor, Buzz, Cam-Lock, Channeled Ventilation, Overbrow Ventilation, Cinch Guide, Composite Fiber Intake (CFI), Composite Construction, Double-Walled Construction, Durable & Resilient EPP, ErgoDial, Event, Event XC, Flea, Flip Mirror, Float Fit, Flying Bridge Visor, FormFit, Full Flex, Full-9, Fusion In-Mold, Gage, GoggleGuide, Intersect, Javelin, Lumen, Microshell, Moto-8, Moto-9, Muni, Octane, Overbrow Ventilation, Overdrive, Pinchguard, Piston, Presidio, Progressive Layering, Reflex, Sanction, Segment, Segment Jr., Sequence, Shasta, Slant, Solar, Solar Flare, Solara, Soundtrax, Speed Dial, Star Pro, Stoker, StreamJet Ventilation, Strut, Super 2, Super 2R, Transfer-9, Trigger, Twin Axis Gear (TAG), Variable Position Visor, Velocity Flow Ventilation, Volt RL, Volt XC, XLP, and Zipper are trademarks of Bell Sports, Inc. GoPro, X-Static, and XT-2 are trademarks of their respective owners.



BRG SPORTS

5550 Scotts Valley Drive | Scotts Valley, CA 95066
Tel. 831-461-7500 | Fax. 831-461-7503

SALES AND CUSTOMER SERVICE—AMERICAS/PACIFIC RIM

1001 Innovation Road
Rantoul, IL 61866
Dealer Sales Tel. 800-776-5677
Dealer Sales Fax. 800-888-9009
Online Dealer Support: brgdealersupport.com
Credit Team Tel. 866-525-2357
Consumer Hotline Tel. 800-456-2355

SALES AND CUSTOMER SERVICE—EUROPE

River House, St. Mary's Road
Newcastle West, County Limerick Ireland
Tel. +353-69-61544
Fax. +353-69-61550

BELLHELMETS.COM